



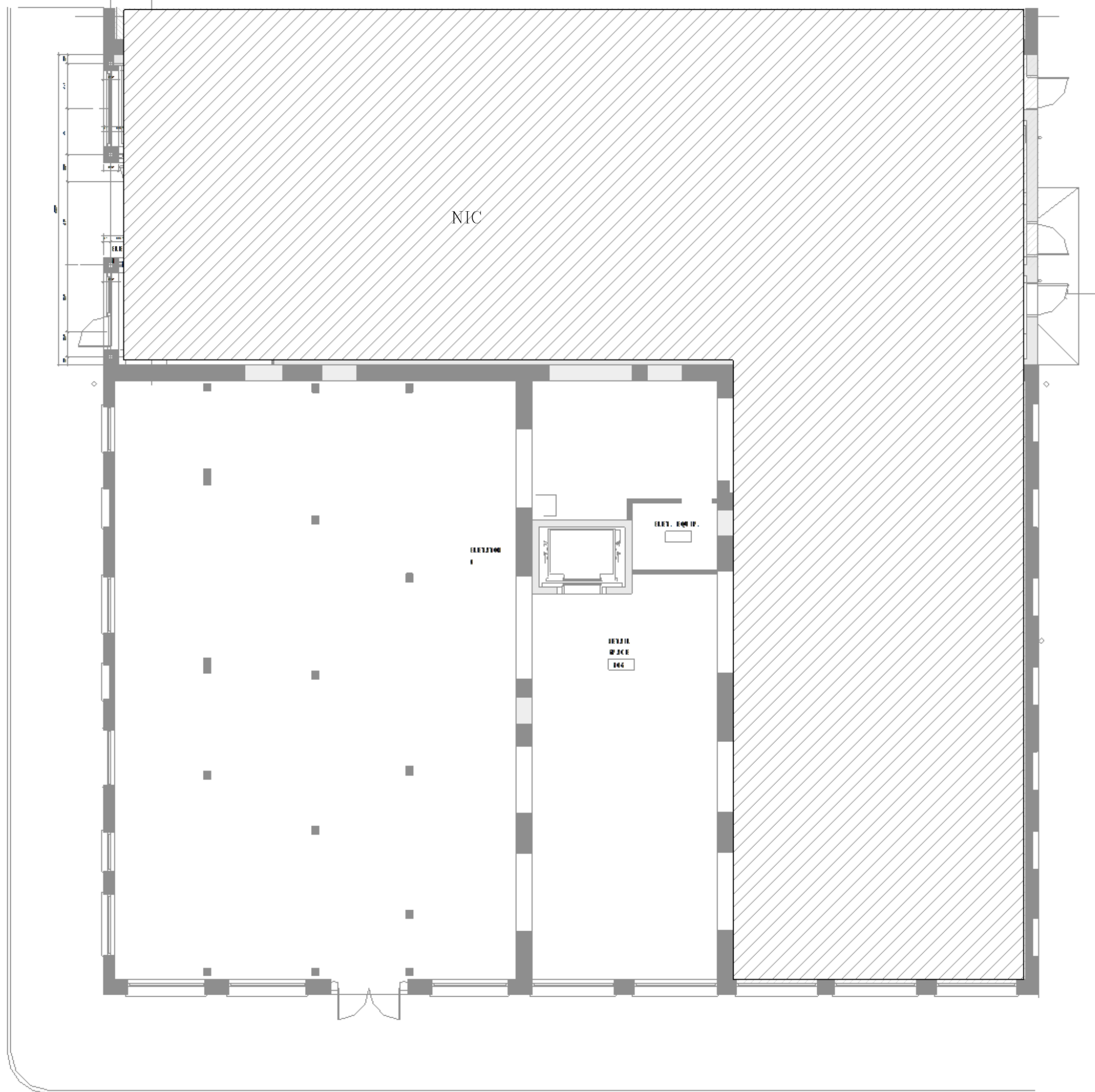
Summer Bray

PETAL

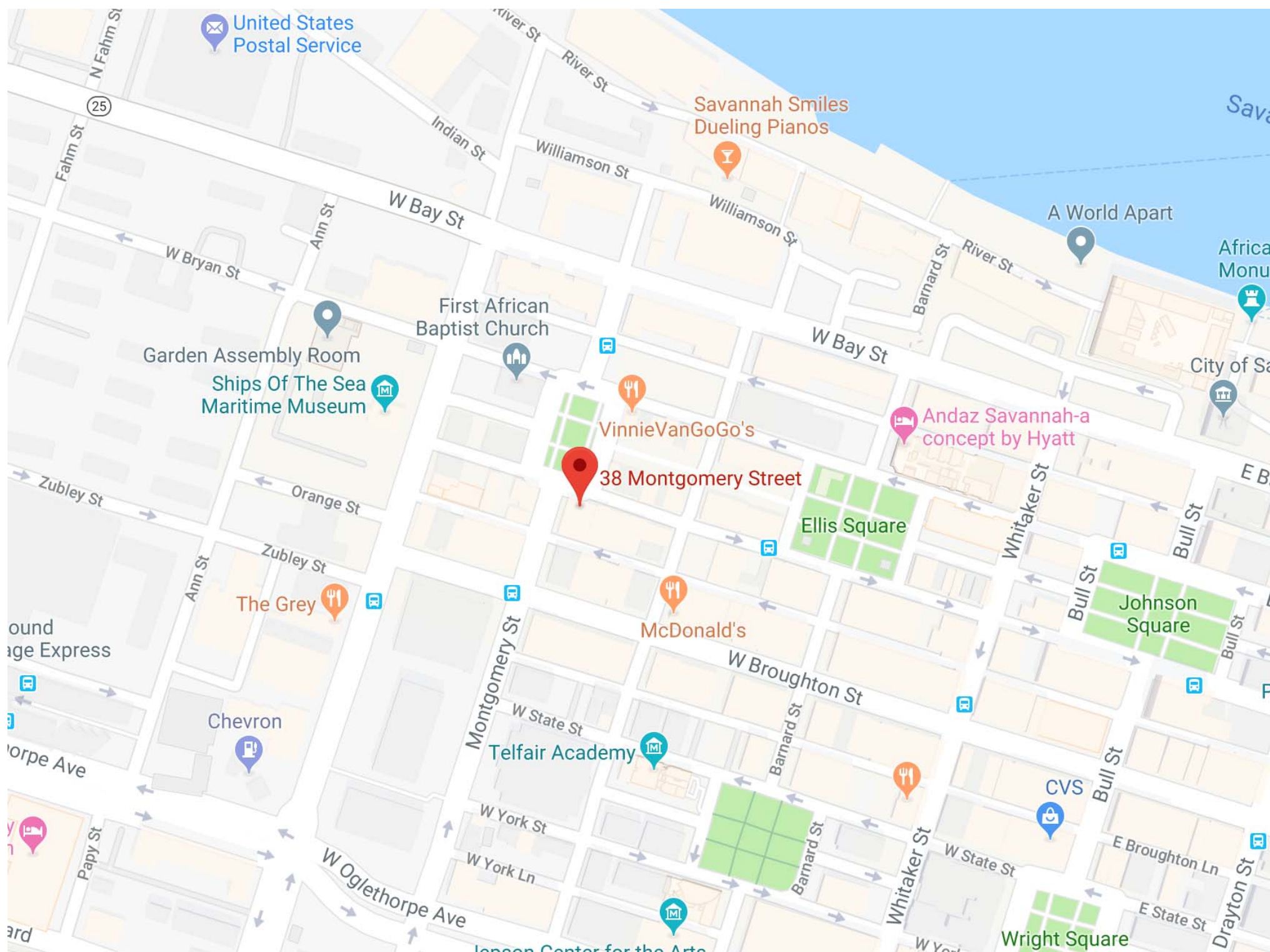
38
Montgomery St
Savannah,
Ga
31401

Cover Page

A001



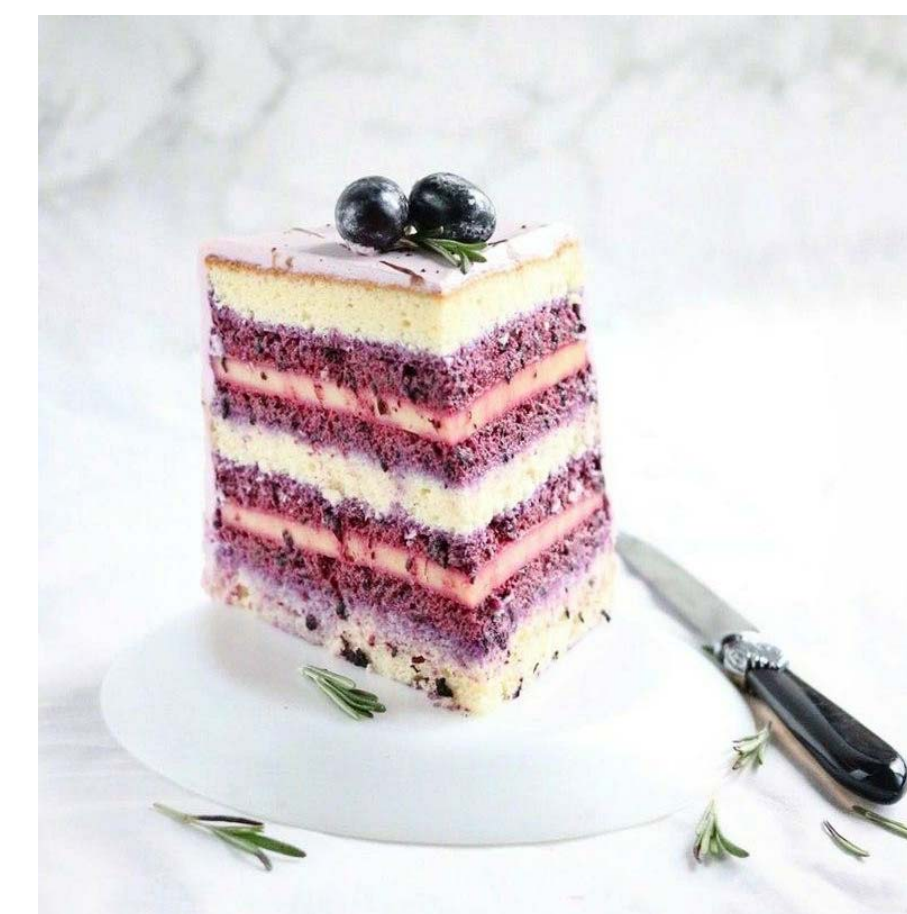
Key Plan



Site Plan 



Petal



Client: Claire Ptak

Address: 38
Montgomery St
Savannah, Ga 31401

List of Drawings:

- A100–Level 1 Floor Plan
- A101–Level 2 Floor Plan
- A110–Level 1 Reflected Ceiling Plan
- A111–Level 2 Reflected Ceiling Plan
- A120–Level 1 Finish Plan
- A121–Level 2 Finish Plan
- A130–Level 1 Furniture Plan
- A131–Level 2 Furniture Plan
- A200–Interior Elevations



Summer Bray

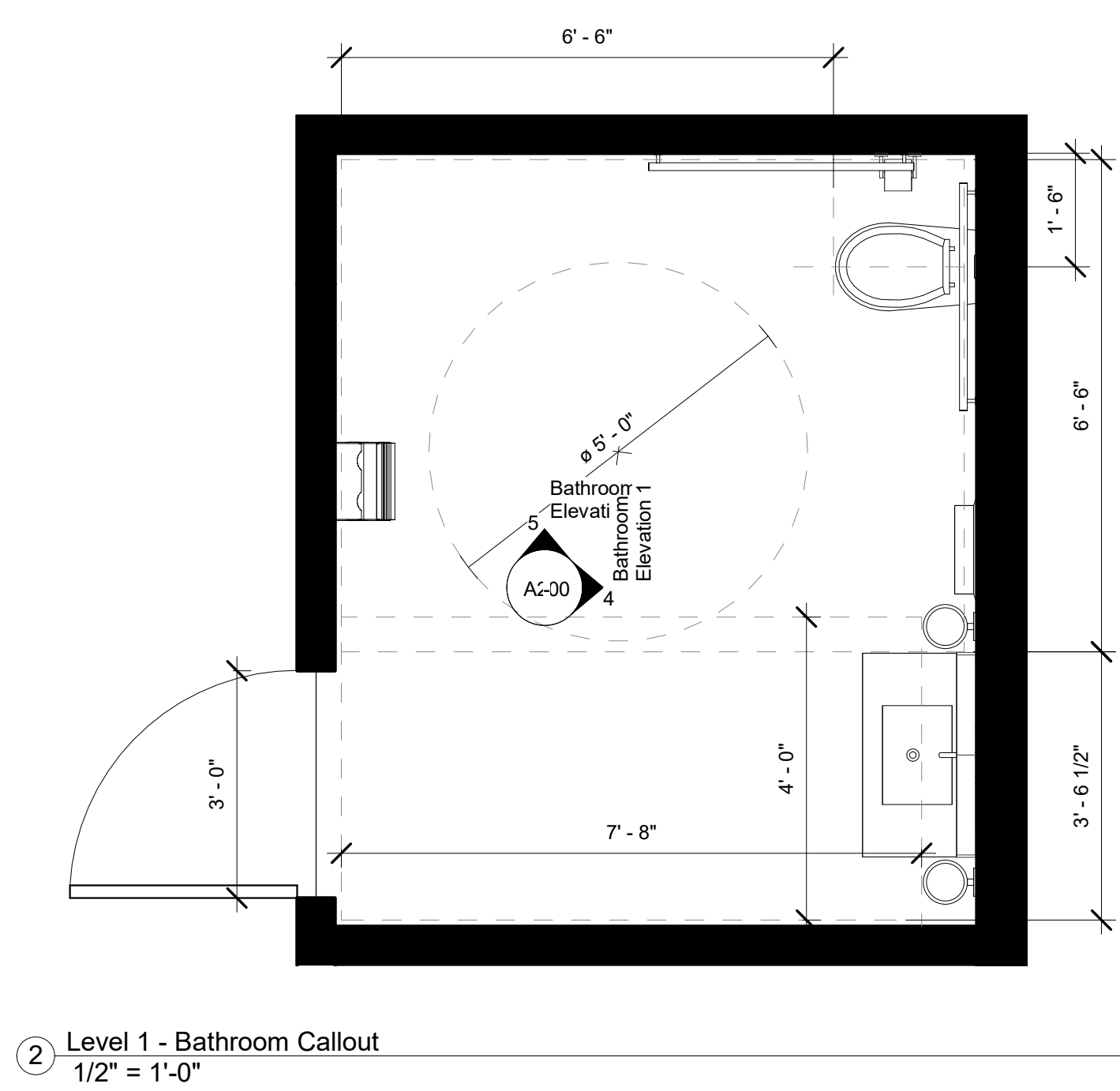
PETAL

38
Montgomery
St
Savannah,
Ga
31401

Level 1 Floor
Plan

A100

As indicated



1 Level 1 Floor Plan
1/4" = 1'-0"

2 Level 1 - Bathroom Callout
1/2" = 1'-0"



Summer Bray

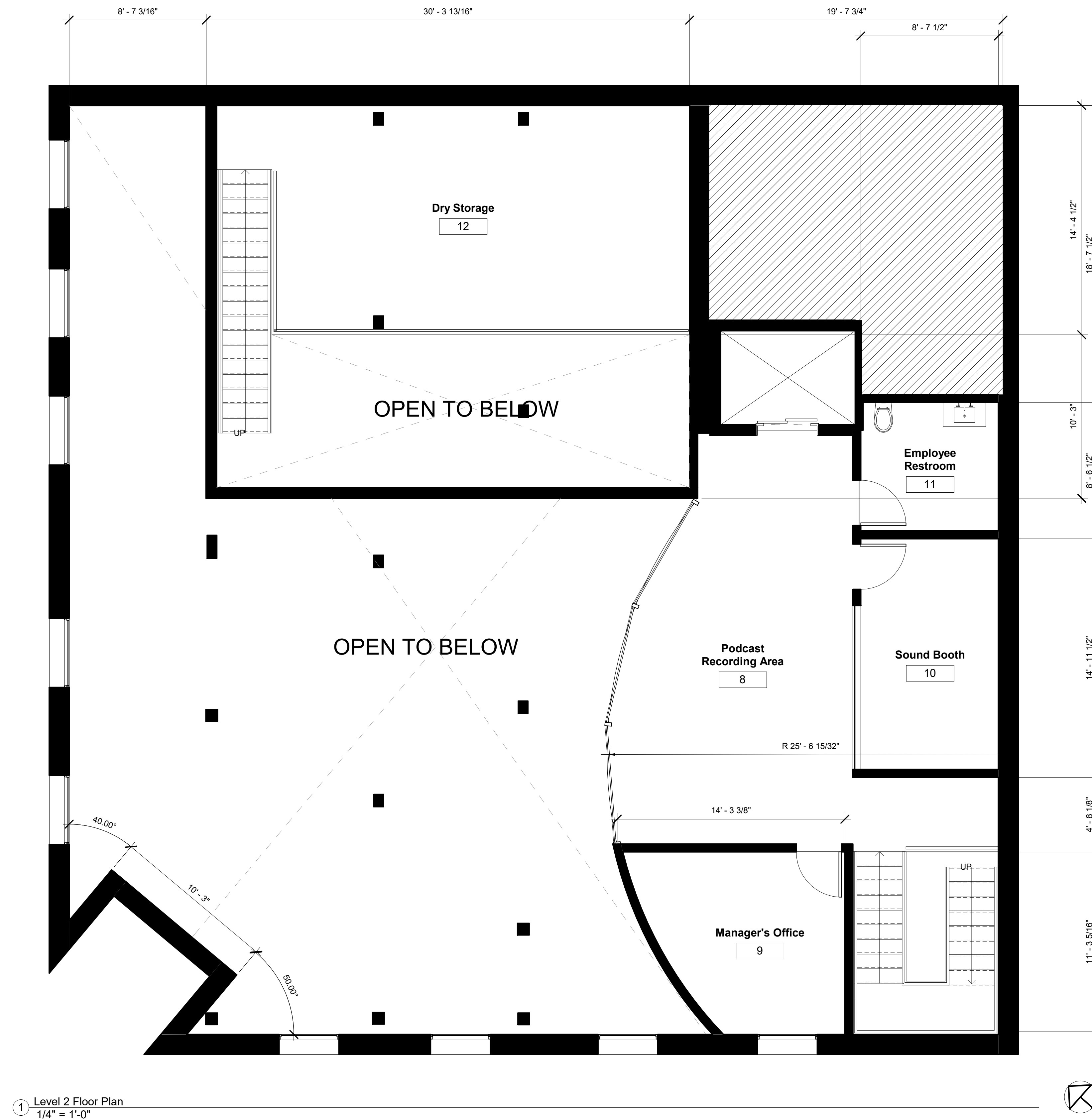
PETAL

38
Montgomery
St
Savannah,
Ga
31401

Level 2 Floor
Plan

A101

1/4" = 1'-0"



① Level 2 Floor Plan
1/4" = 1'-0"



Summer Bray

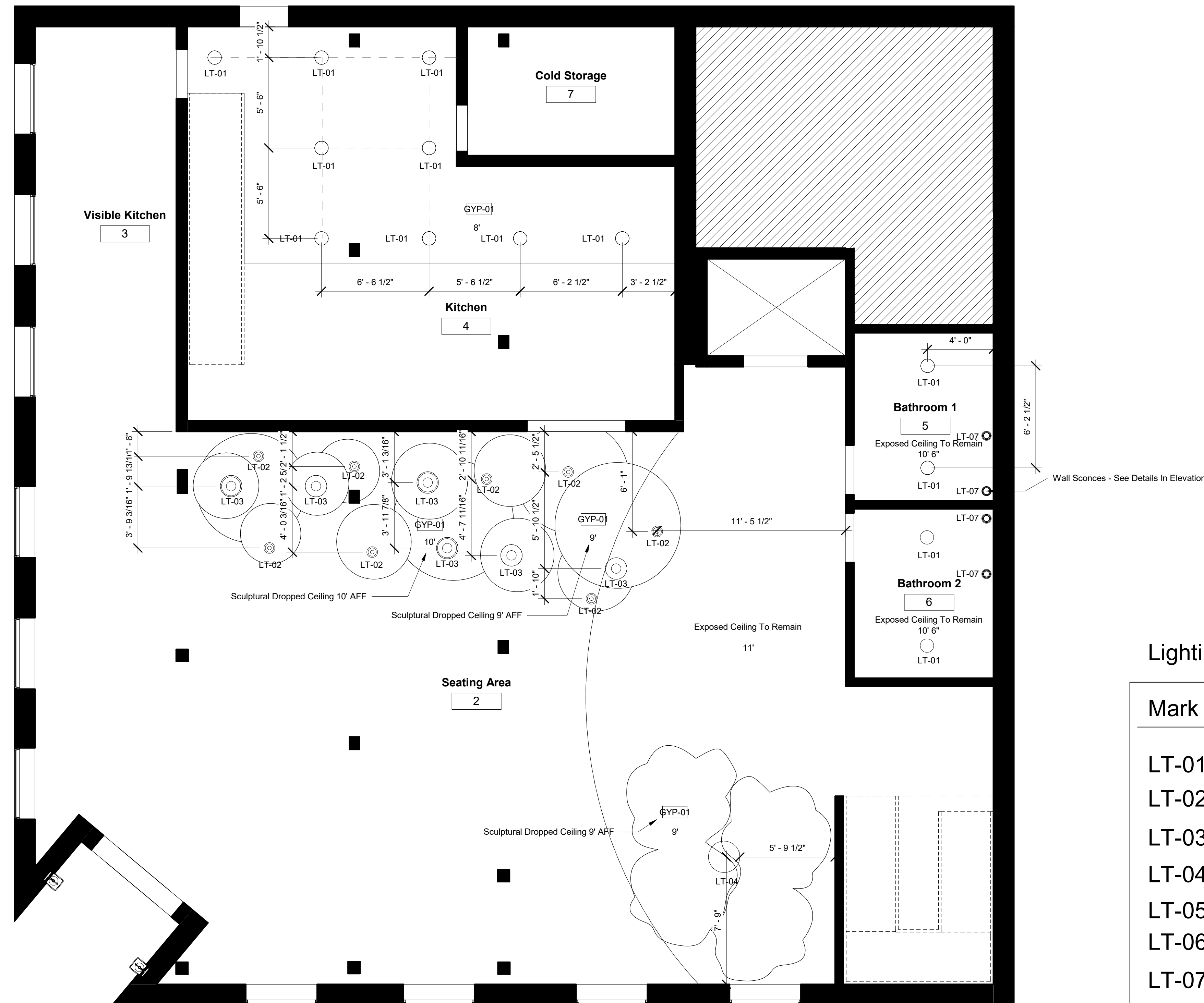
PETAL

38
Montgomery
St
Savannah,
Ga
31401

Level 1 Reflected
Ceiling Plan

A110

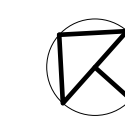
1/4" = 1'-0"



Lighting Legend

Mark	Description
LT-01	Recessed Light
LT-02	Stained Glass Hanging Lamp
LT-03	Abalone Capiz Light
LT-04	Murano Glass Chandelier
LT-05	Gasolier Cast Brass Chandelier
LT-06	Lotus Flower Lantern
LT-07	Victorian Style Hardwired Sconce

Level 1
1/4" = 1'-0"





Summer Bray

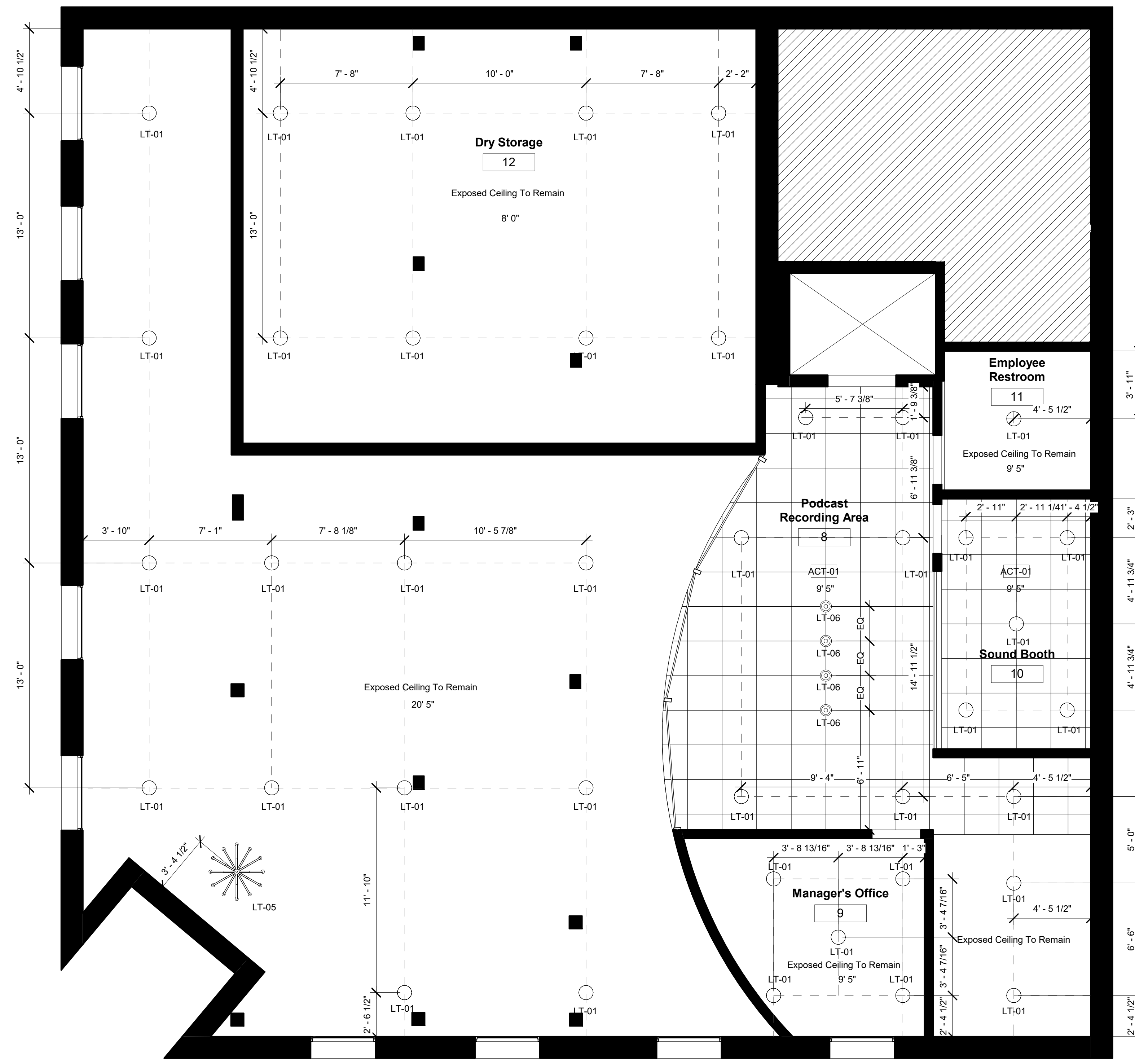
PETAL

38
Montgomery
St
Savannah,
Ga
31401

Level 2 Reflected
Ceiling Plan

A111

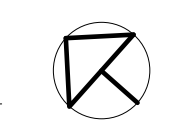
1/4" = 1'-0"



Lighting Legend

Mark	Description
LT-01	Recessed Light
LT-02	Stained Glass Hanging Lamp
LT-03	Abalone Capiz Light
LT-04	Murano Glass Chandelier
LT-05	Gasolier Cast Brass Chandelier
LT-06	Lotus Flower Lantern
LT-07	Victorian Style Hardwired Sconce

① Level 2
1/4" = 1'-0"





Summer Bray

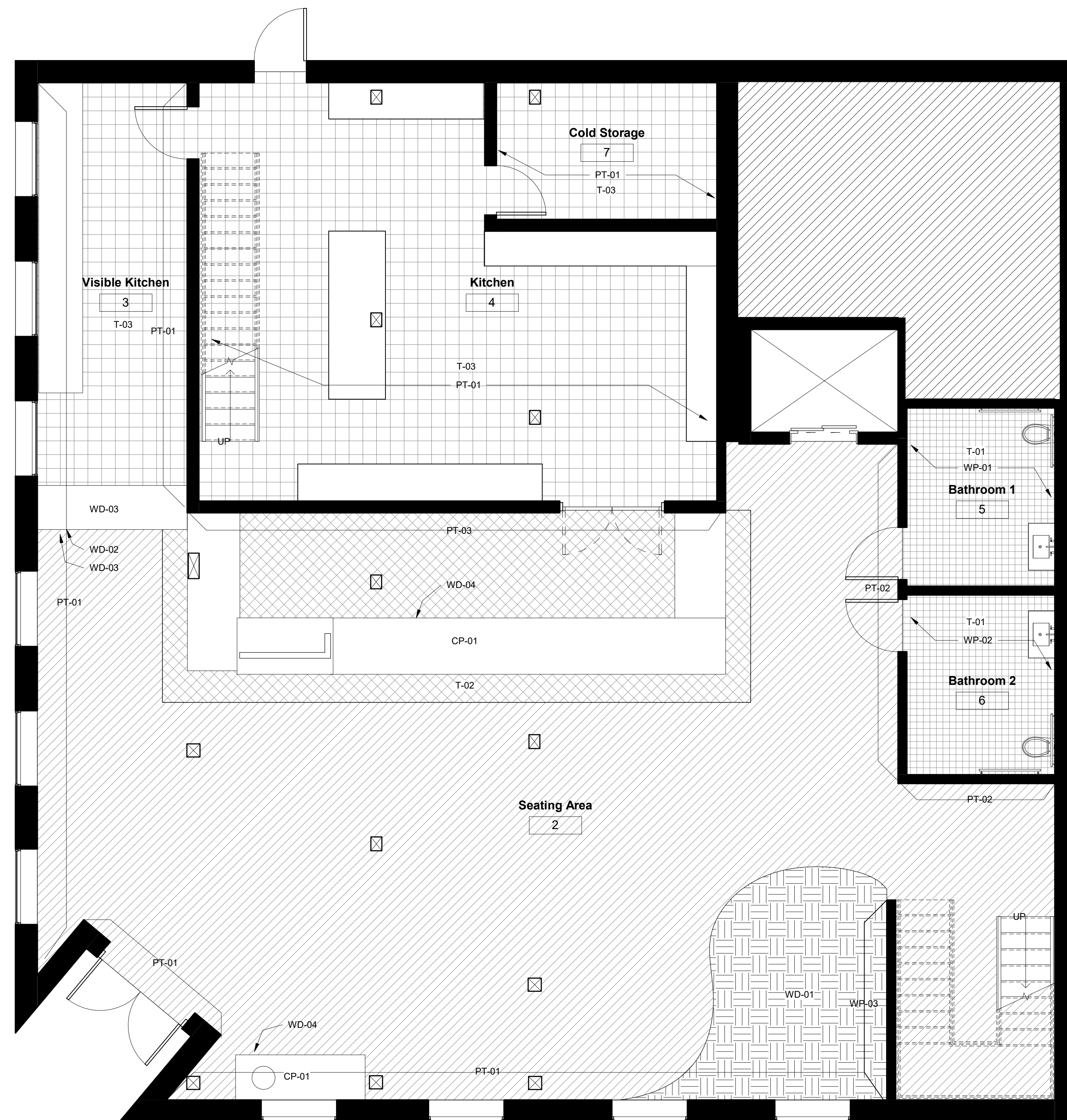
PETAL

38
Montgomery
St
Savannah,
Ga
31401

Level 1 Finish
Plan

A120

1/4" = 1'-0"



Finish Legend

Mark	Description
	Existing Flooring To Remain
ACP-01	Tulip Wall Panel
ACP-02	Rosette Wall Panel
C-01	Dye Lab Carpet Tile
CP-01	Hammered Copper Countertop
G-01	Mused Etch Glass Panel
PT-01	SW 7035- Aesthetic White
PT-02	SW 6510- Loyal Blue
PT-03	SW 6862- Cherries Jubilee
PT-04	SW 6020-Marooned
T-01	Mademoiselle Arabesque Tile
T-02	Star Ceramic Tile
T-03	Arid Gray Ceramic Quarry Tile
WD-01	Custom Reclaimed Parquet Flooring
WD-02	Reclaimed Gingerbread Trim
WD-03	Antique Long Leaf Pine Planks
WD-04	Northwestern Spruce Paneling
WP-01	Charleston Wallpaper
WP-02	Adamstown Newspaper Wallpaper
WP-03	Isobar Cake Pin-Up Wallpaper
WP-04	Garden Bloom Wallpaper

① Level 1 Finish Plan
1/4" = 1'-0"





Summer Bray

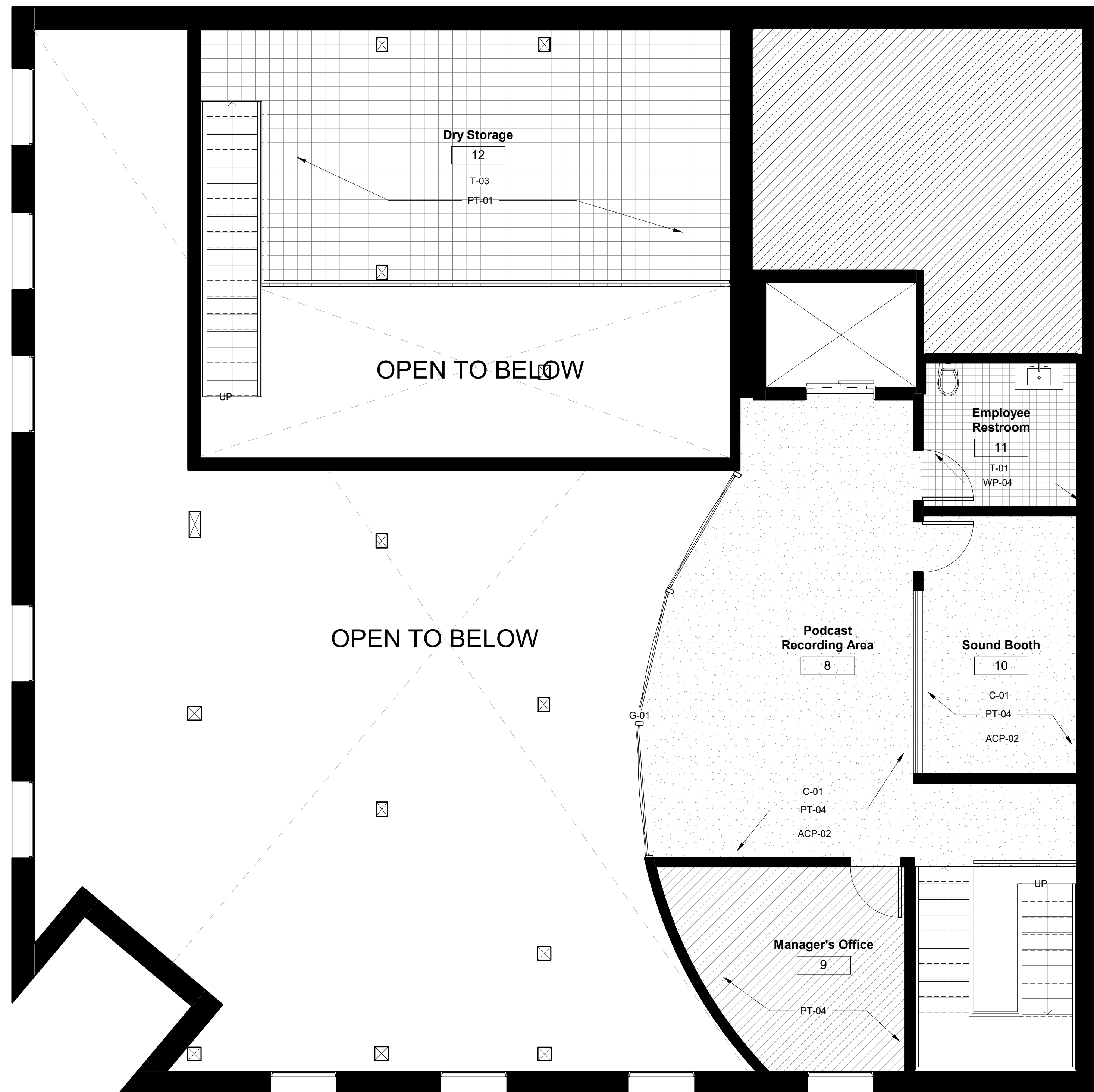
PETAL

38
Montgomery
St
Savannah,
Ga
31401

Level 2 Finish
Plan

A121

1/4" = 1'-0"



Finish Legend

Mark	Description
	Existing Flooring To Remain
ACP-01	Tulip Wall Panel
ACP-02	Rosette Wall Panel
C-01	Dye Lab Carpet Tile
CP-01	Hammered Copper Countertop
G-01	Mused Etch Glass Panel
PT-01	SW 7035- Aesthetic White
PT-02	SW 6510- Loyal Blue
PT-03	SW 6862- Cherries Jubilee
PT-04	SW 6020-Marooned
T-01	Mademoiselle Arabesque Tile
T-02	Star Ceramic Tile
T-03	Arid Gray Ceramic Quarry Tile
WD-01	Custom Reclaimed Parquet Flooring
WD-02	Reclaimed Gingerbread Trim
WD-03	Antique Long Leaf Pine Planks
WD-04	Northwestern Spruce Paneling
WP-01	Charleston Wallpaper
WP-02	Adamstown Newspaper Wallpaper
WP-03	Isobar Cake Pin-Up Wallpaper
WP-04	Garden Bloom Wallpaper

① Level 2 Finish Plan
1/4" = 1'-0"

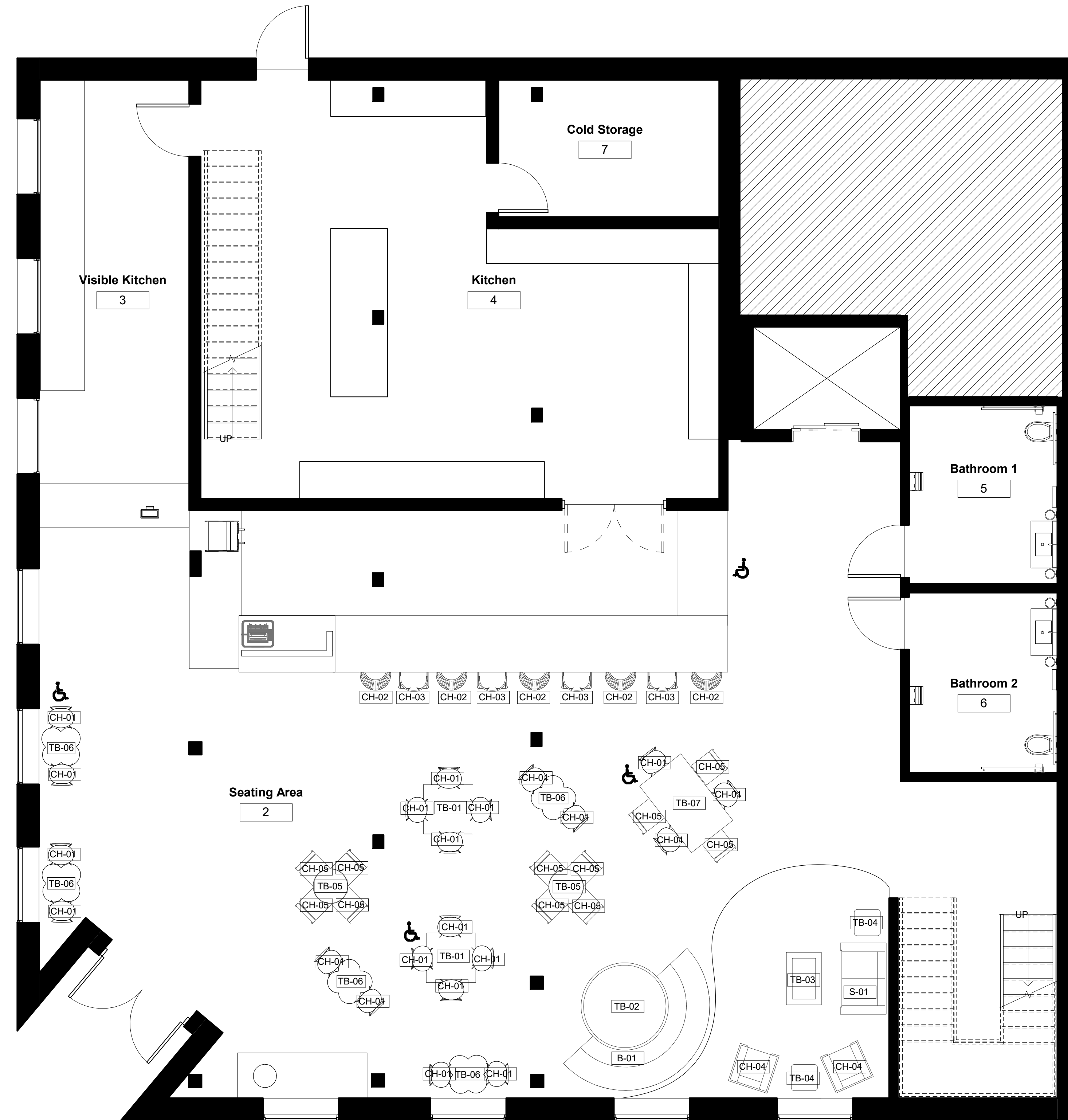




Summer Bray

PETAL

38
Montgomery
St
Savannah,
Ga
31401



① Level 1 Furniture Plan
1/4" = 1'-0"

Level 1 Furniture
Plan

A130

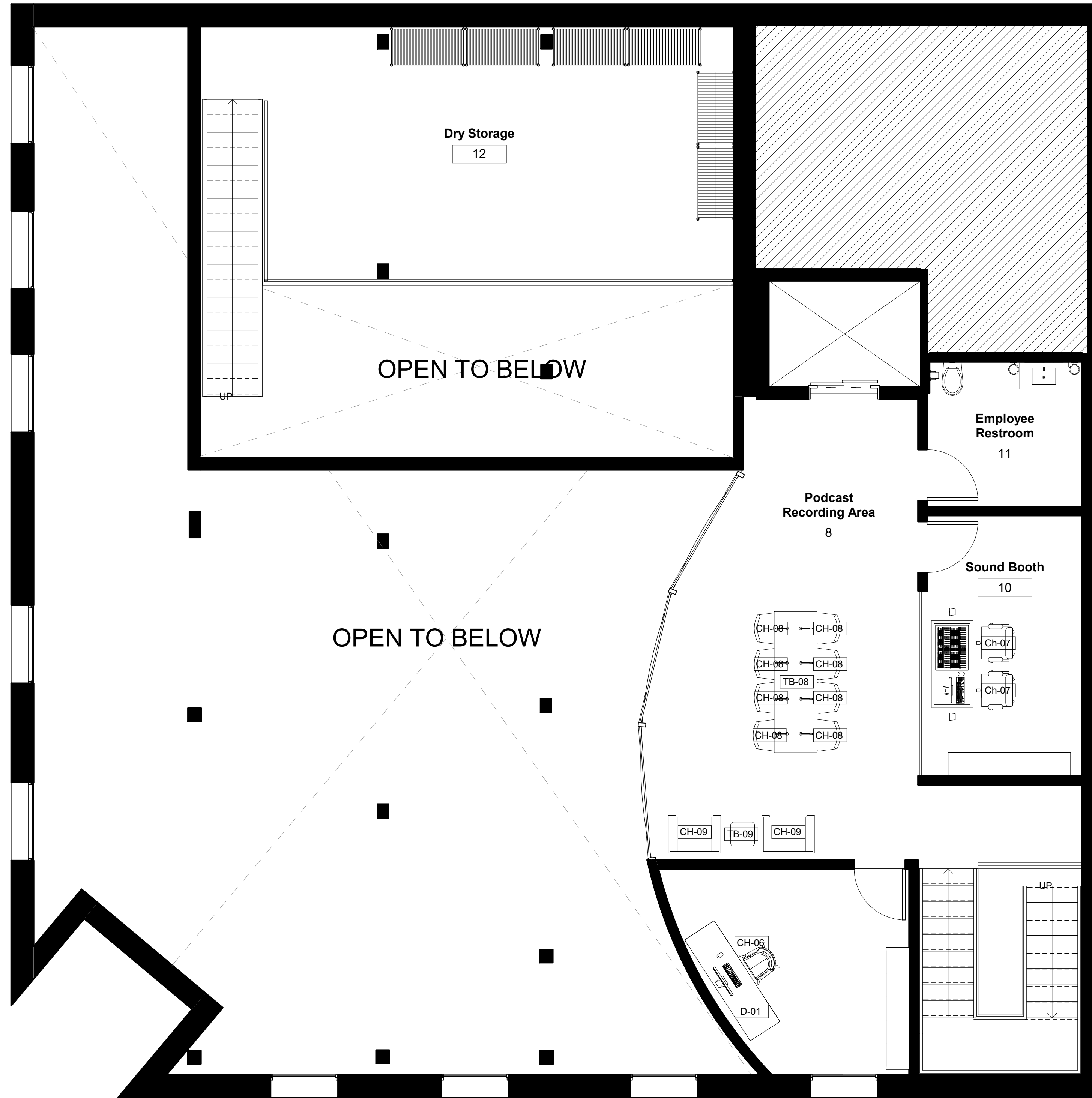
1/4" = 1'-0"



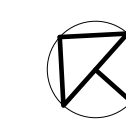
Summer Bray

PETAL

38
Montgomery
St
Savannah,
Ga
31401



① Level 2 Furniture Plan
1/4" = 1'-0"



Level 2 Furniture
Plan

A131

1/4" = 1'-0"



Summer Bray

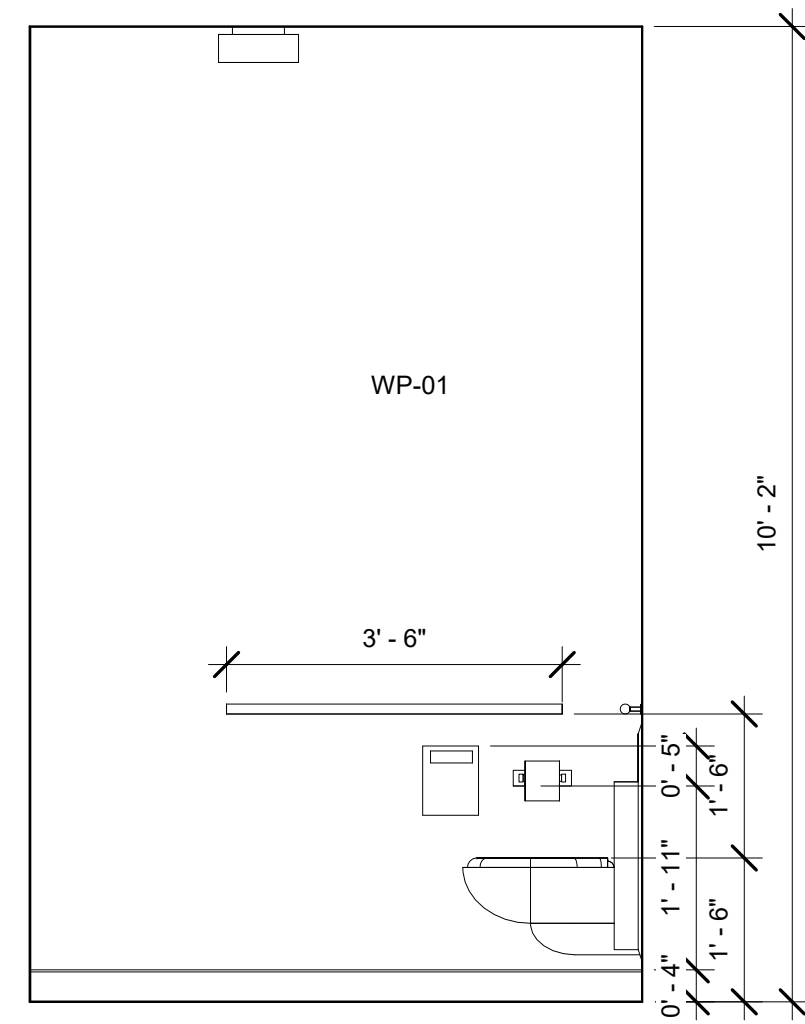
PETAL

38
Montgomery
St
Savannah,
Ga
31401

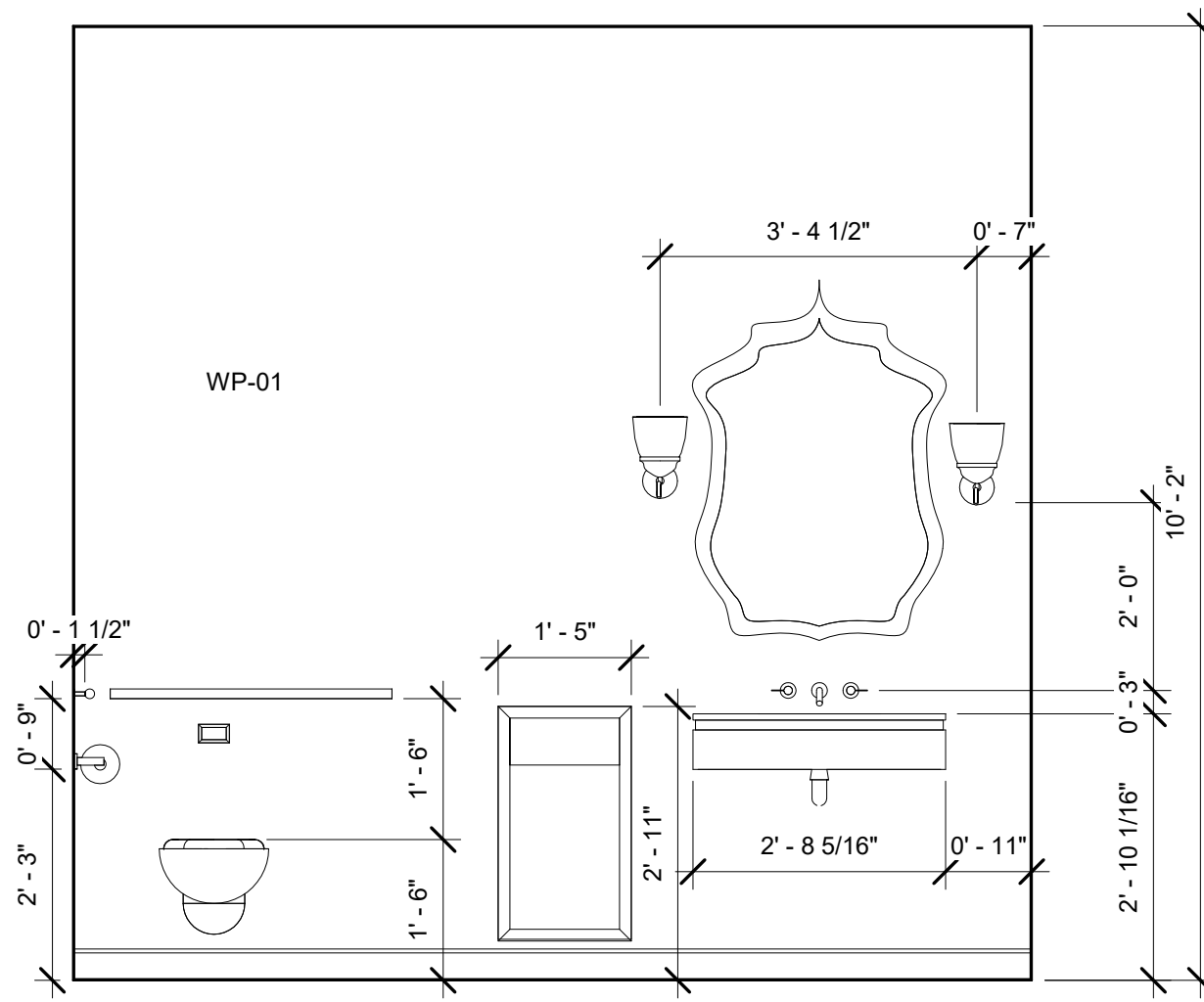
Interior
Elevations

A200

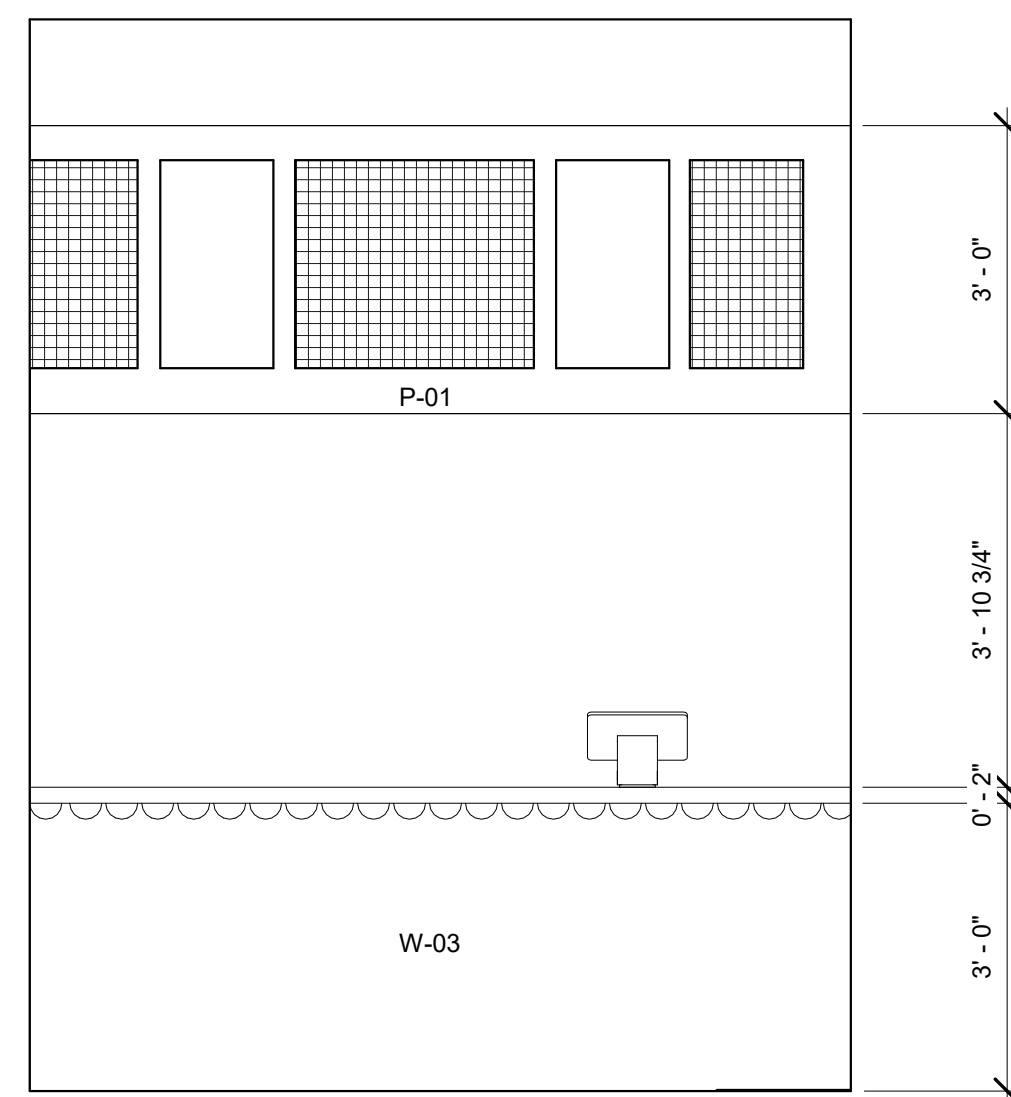
1/2" = 1'-0"



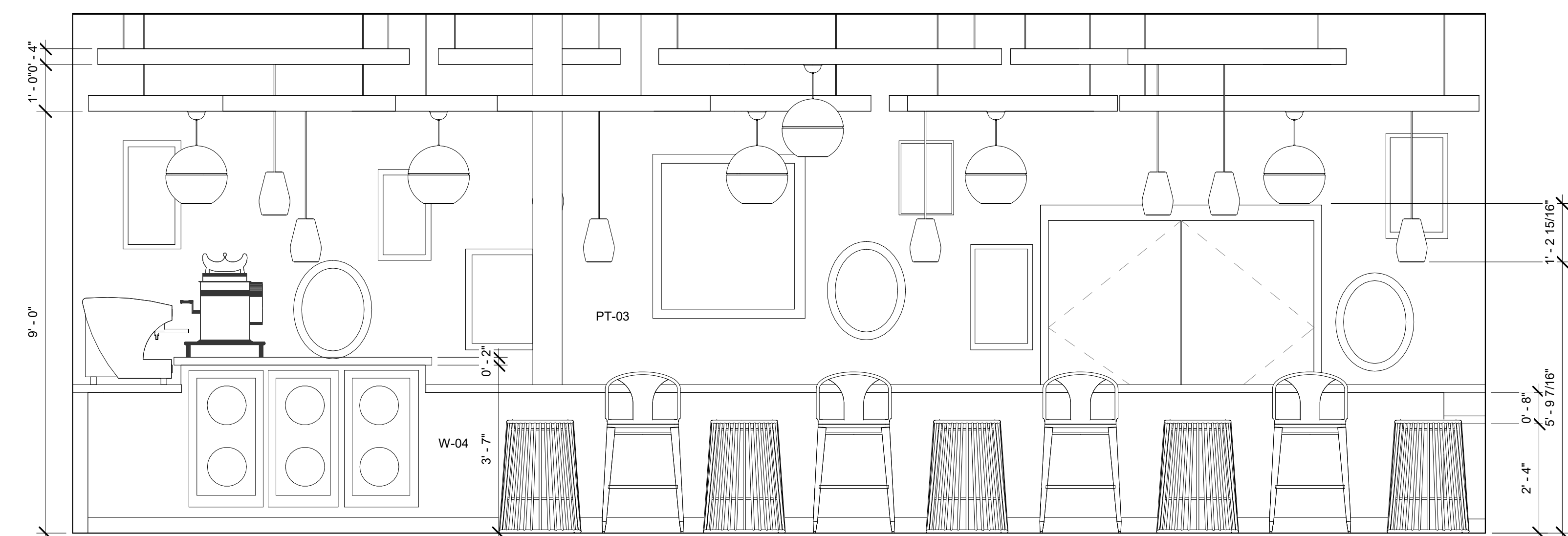
5 Bathroom Elevation 2
1/2" = 1'-0"



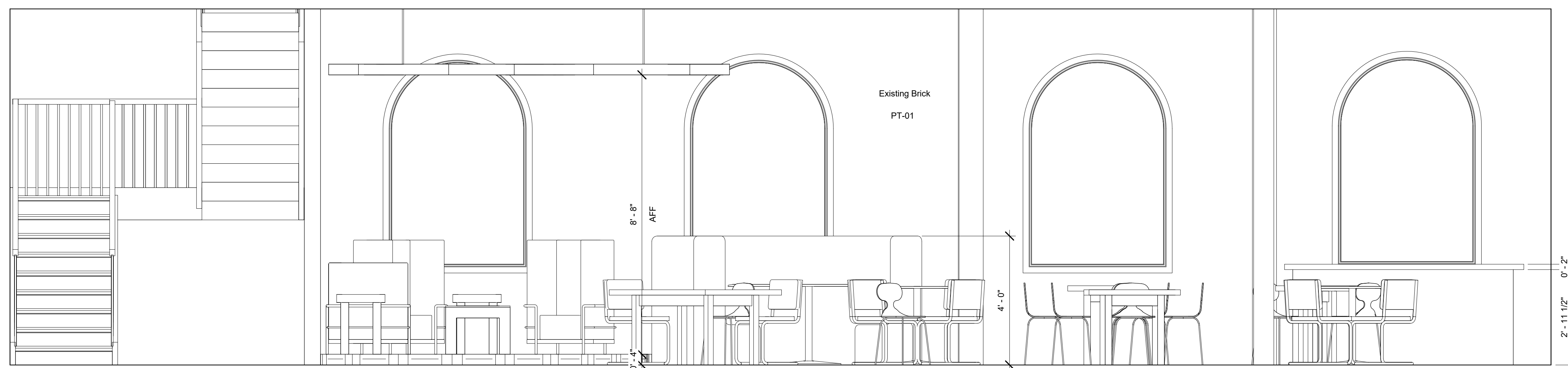
4 Bathroom Elevation 1
1/2" = 1'-0"



2 Counter Elevation
1/2" = 1'-0"



1 Bar Elevation
1/2" = 1'-0"



3 Seating Elevation
1/2" = 1'-0"



Summer Bray

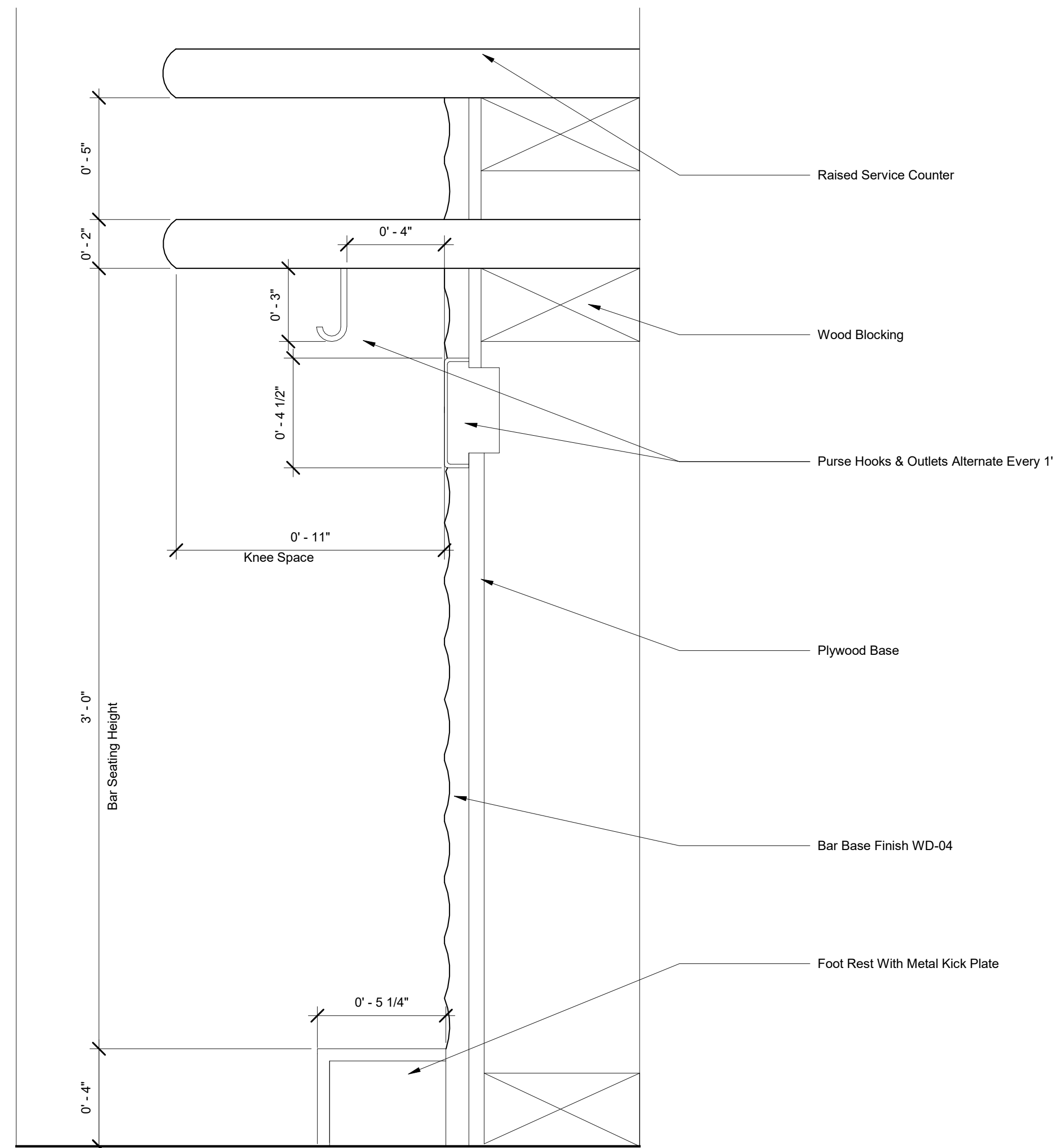
PETAL

38
Montgomery
St
Savannah,
Ga
31401

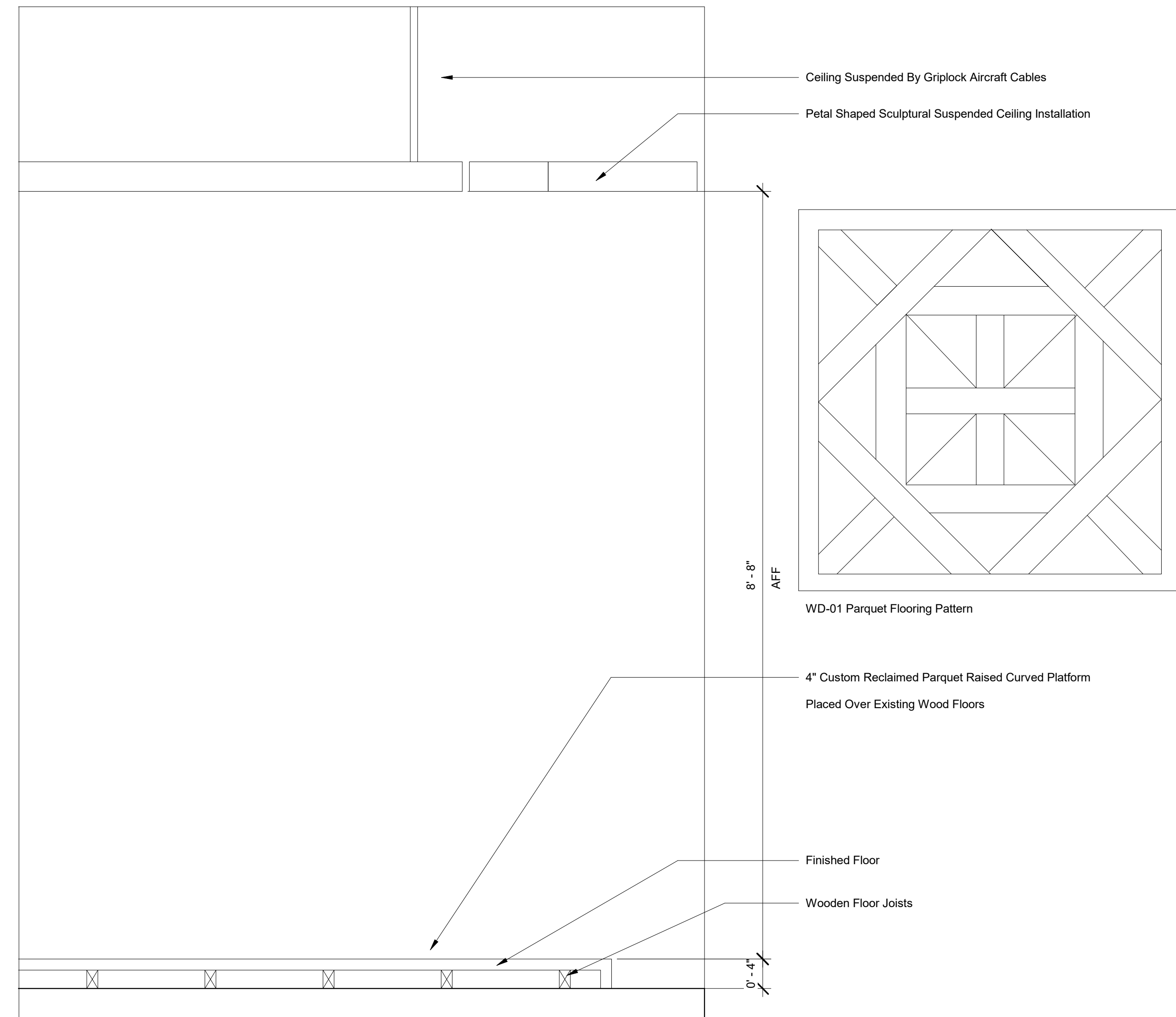
Details

A300

As indicated



① Bar Detail
3" = 1'-0"



② Raised Seating Area Detail
1" = 1'-0"