

# Process Book

Summer Bray  
Form | Space | Order  
INDS 102  
Prof. Ronaszegi



# Table of Contents

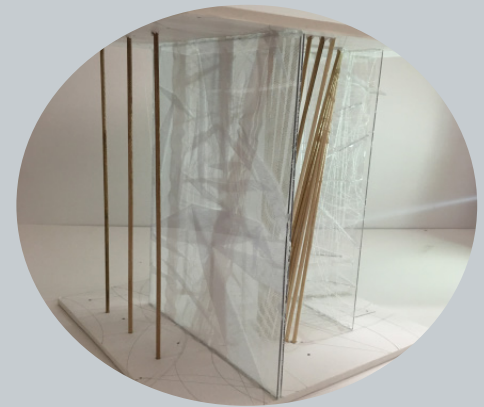
5.....Introduction

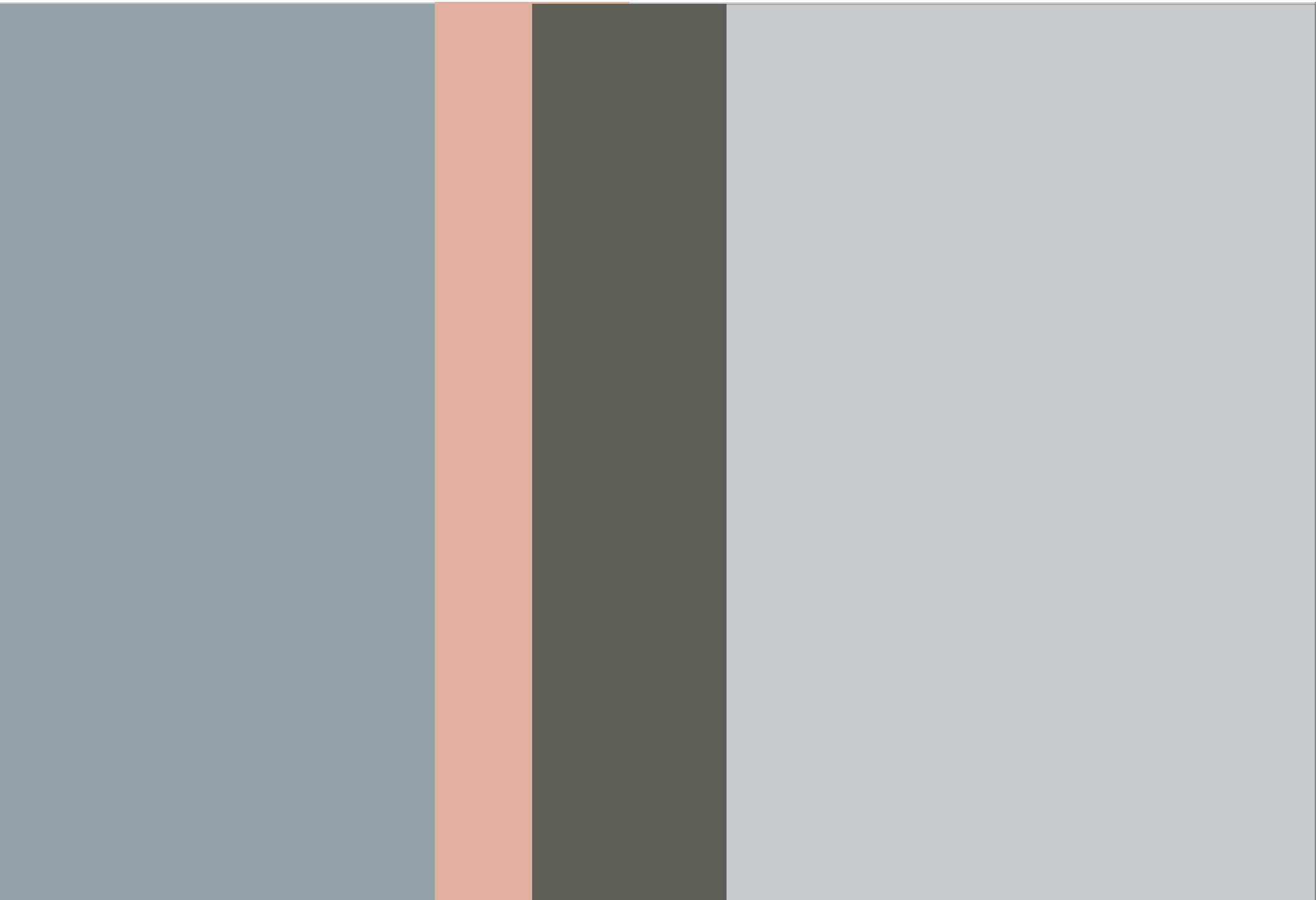
6.....Project One

12.....Project Two

18.....Project Three

25.....Conclusion





# Introduction

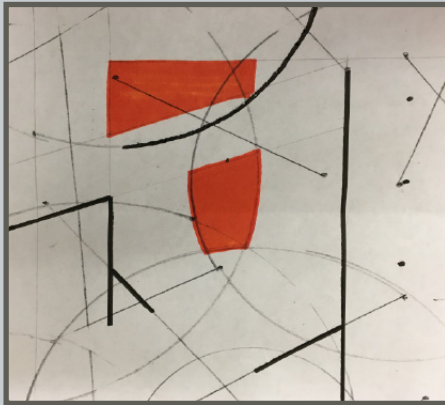
Form, Space, Order cultivates the ability to develop creative abstract design thinking and translate it into the three-dimensional composition of space and form with a system of formal architectural ordering. In this course students use diagramming, drawing and model making through a series of design explorations, including abstract ideation, physical embodiment, architectural composition and precedent analysis exercises. Students experience the integration of principles and elements of three-dimensional design into a formal architectural ordering system.

# Project One

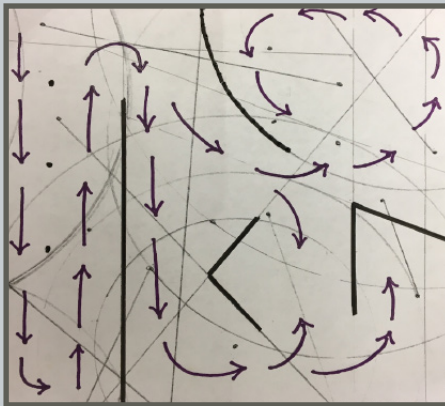
## **Point | Line | Surface**

In this assignment we examined the primary geometric elements: point, line, surface, in rectilinear and curvilinear forms and explore the unique spaces they create. Resulting in my final model, a conceptual design for a bridal boutique.





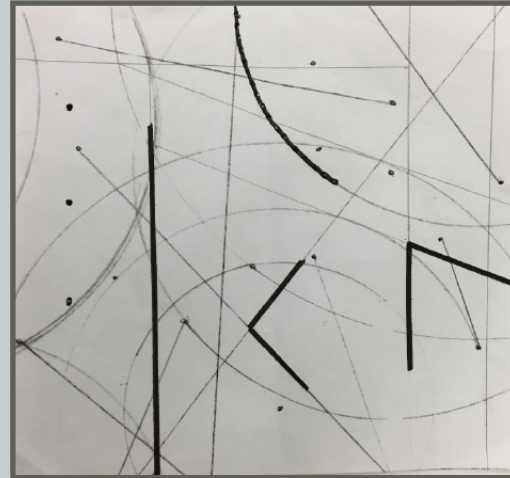
Overhead Light Study



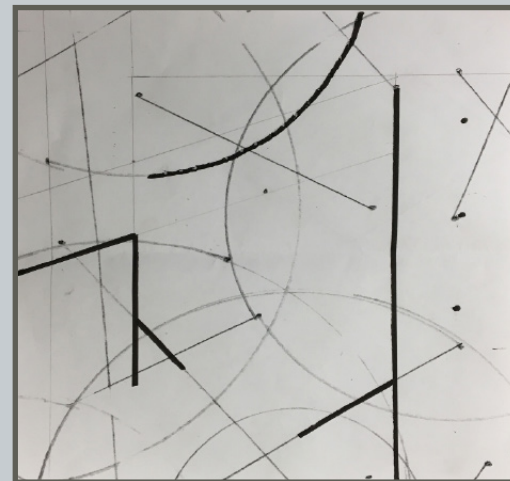
Movement Analysis



Organizations of Space



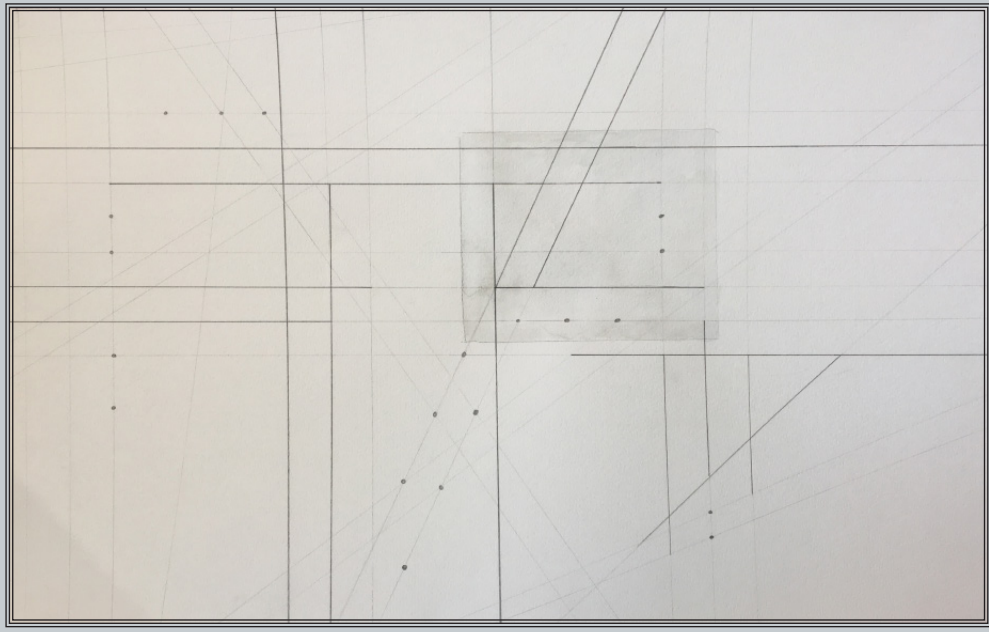
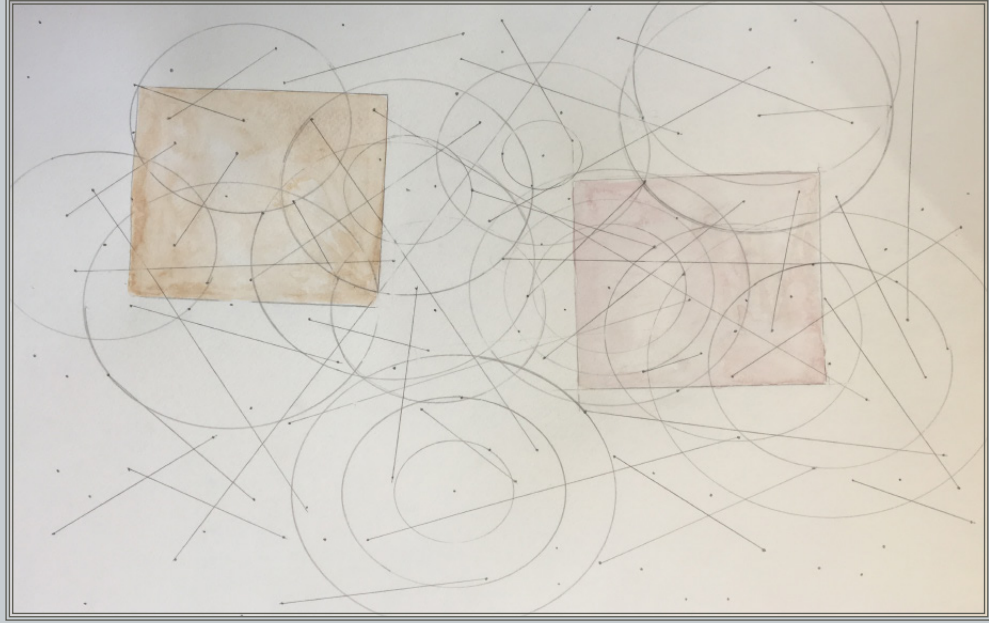
Base Plan



Overhead Plan

Plans Derived from  
Point | Line | Circle  
Drawings

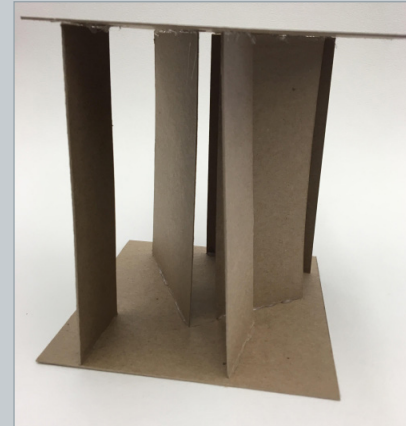
# Point | Line | Circle Drawings







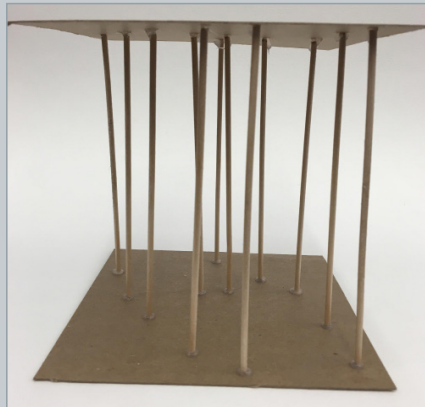
Point Vertical



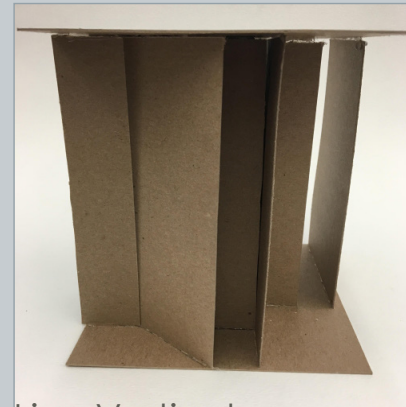
Line Vertical



Composite



Point Vertical



Line Vertical



Circle Vertical

## Nine Study Models

Focusing on Organized & Abstract  
Composition

6 x 6

Chipboard, Wooden Dowels



Point Inclined

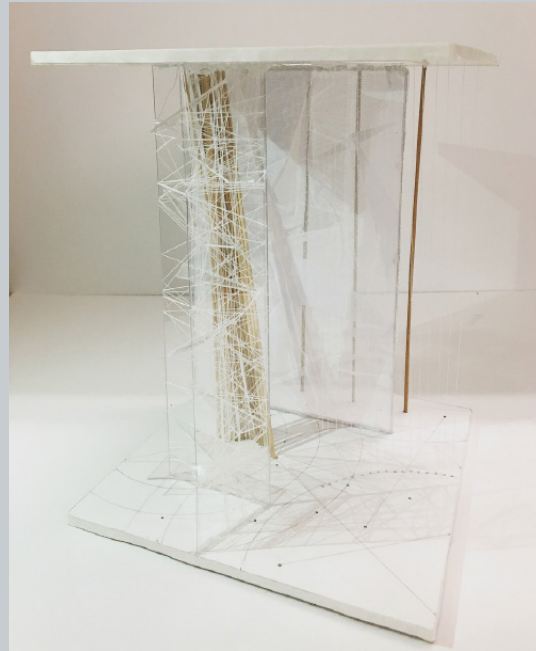
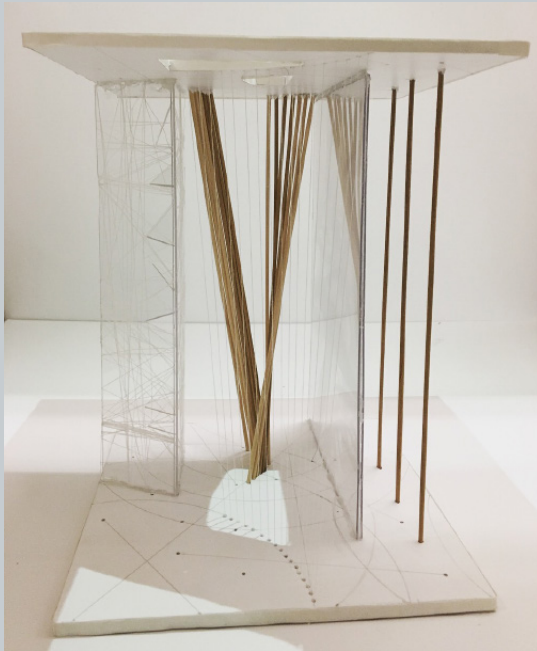


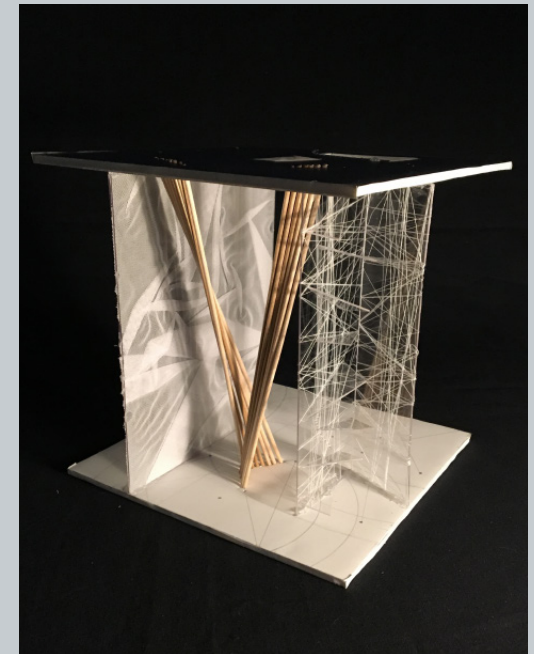
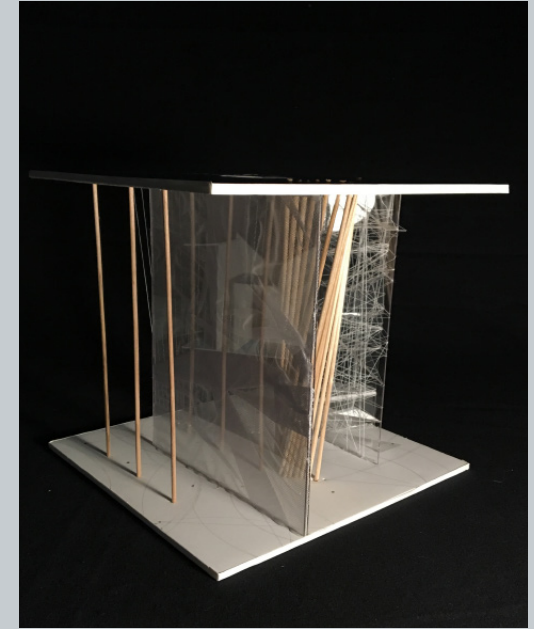
Line Inclined



Circle Inclined

# Light Studies





## Project One Final Model

9 x 9

Foam Core, Plexiglass, Wooden Dowels, Thread, Fabric

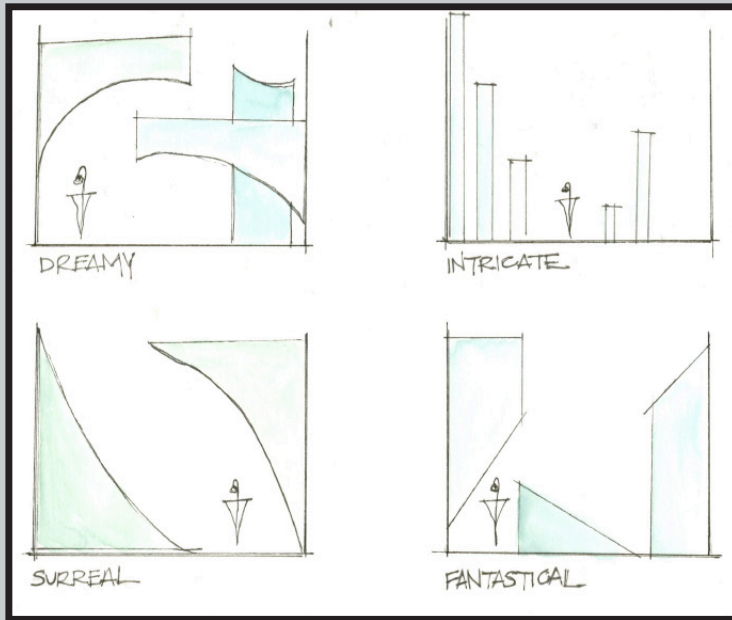
# Project Two

**Form | Spatial relationships | Spatial organizations | Spatial quality**

In this assignment I examined different relationships and organizations of spaces that they have with each other. My designs are influenced by the artist I researched; French illustrator Lucille Clerc. We were to create a grid to base our plans off of that then were organized into the five spacial organizations. One study model in this assignment was based off of a song of our choice. I picked Edith Piaf's La Vie En Rose, a classic French love song that shows characteristics of elegance, and fluidity that puts the listener in a dream like state.

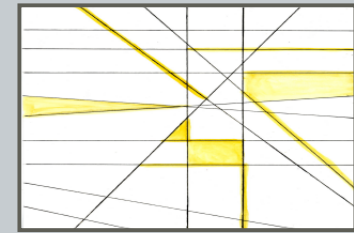


Models based off of grids, and certain spacial organizations.

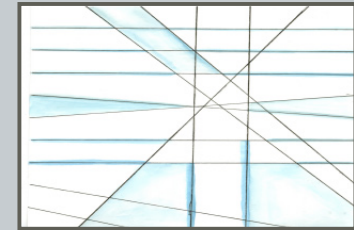


Spatial Proportions  
Represented by Words  
Describing Lucille  
Clerc's Work

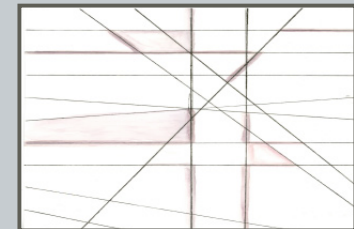
Clustered



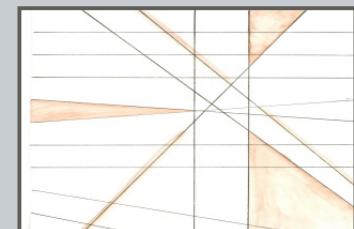
Linear



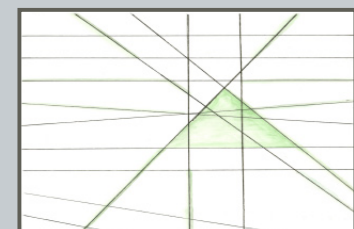
Grid

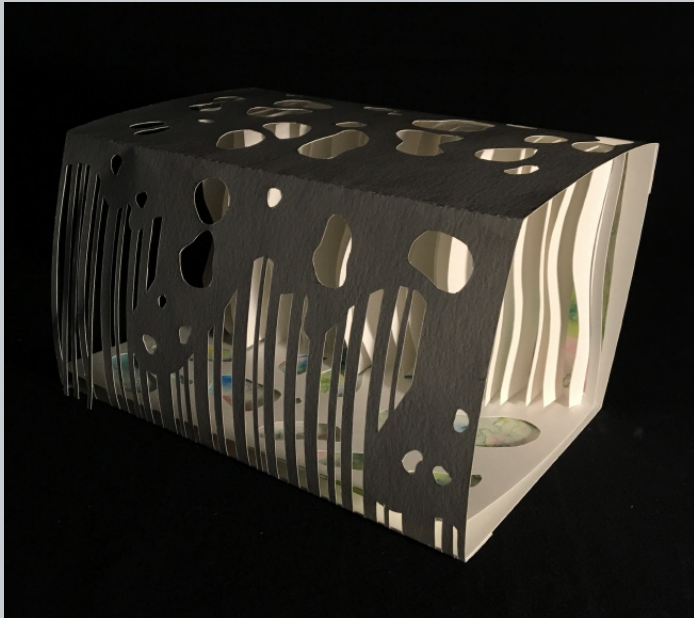


Radial



Centralized

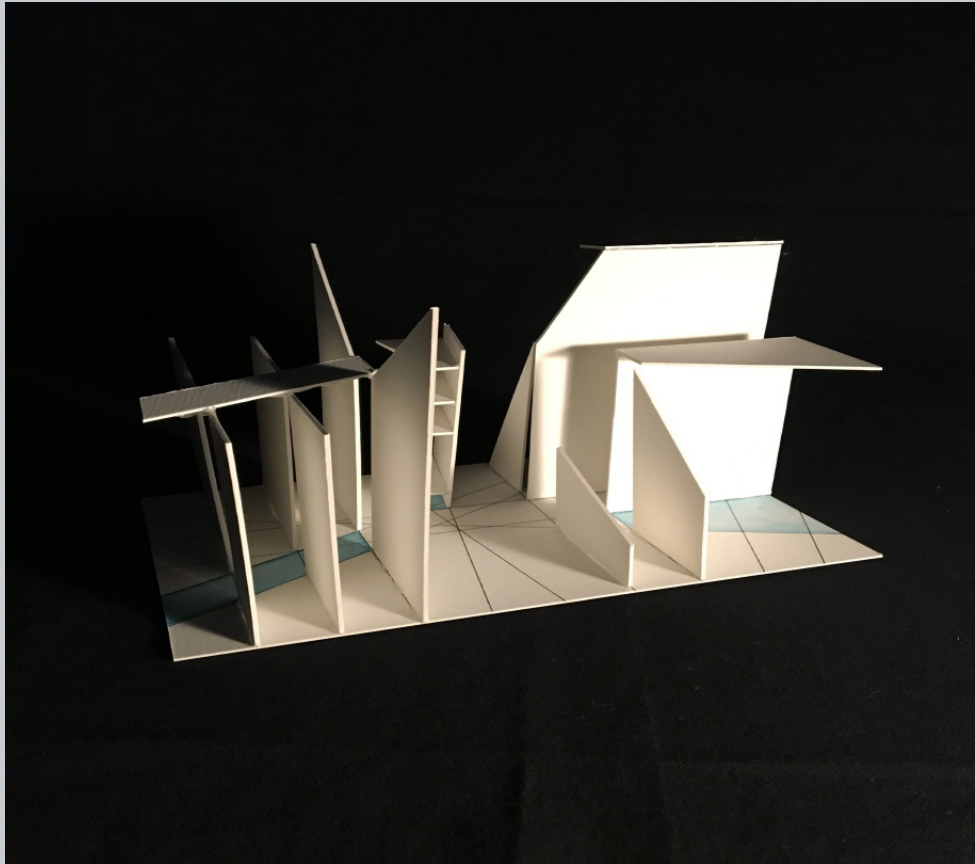




## Space Influenced by Song

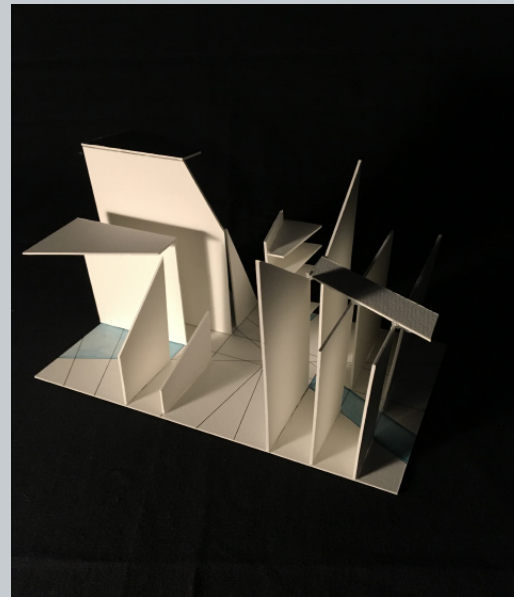
Model Built to Reflect *La Vie En Rose*  
by Edith Piaf  
Capturing the Essence of the Song  
Through Light, Space, Form, and Color

6 x 10 Cube  
Paper, Watercolor



Process Model Focusing on  
Spatial Organization, and  
Starting to Look at Vertical  
Movement

6 x 10 x 6 Museum Board







### **Project Two Final Model**

I created a collage to tell a story about my artist. Its a blend of some of her illustrated works which creates a cohesive piece of imagery that represents her style. This model focused on the vertical plane, repeating horizontal elements, and the relationship between the different levels/ planes.

6 x 10 x 6 Museum Board, Plexiglass, Copper Wire

## Project Three

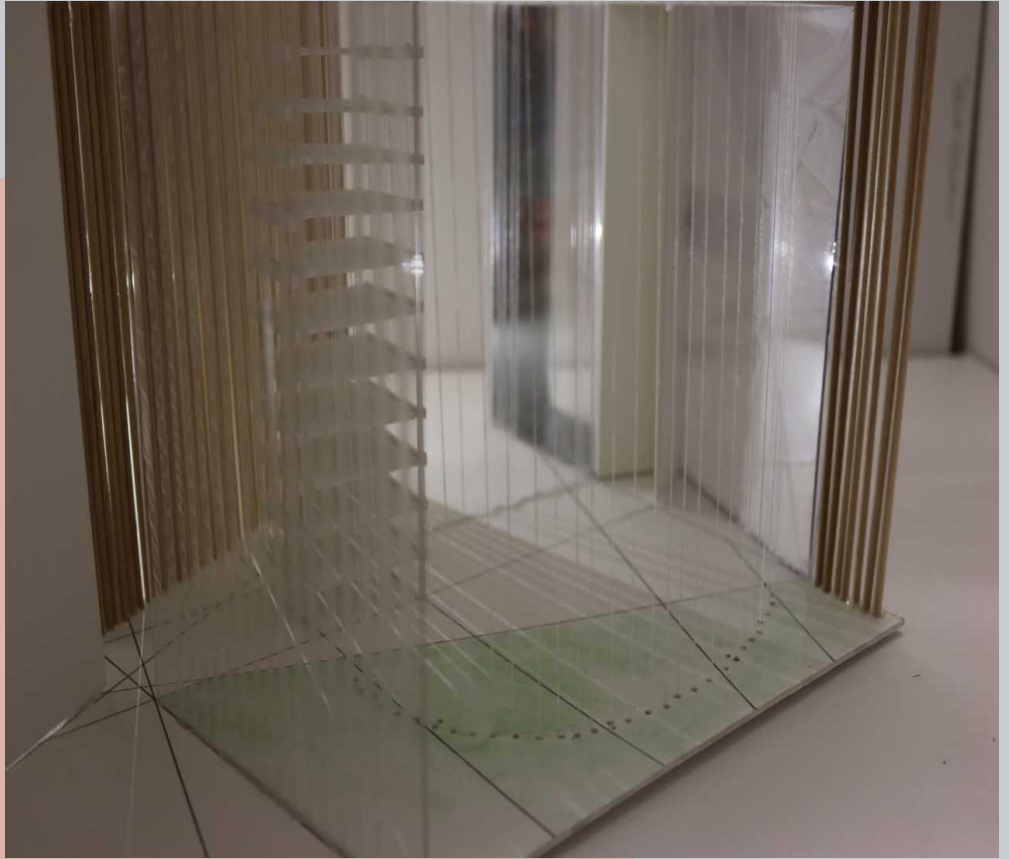
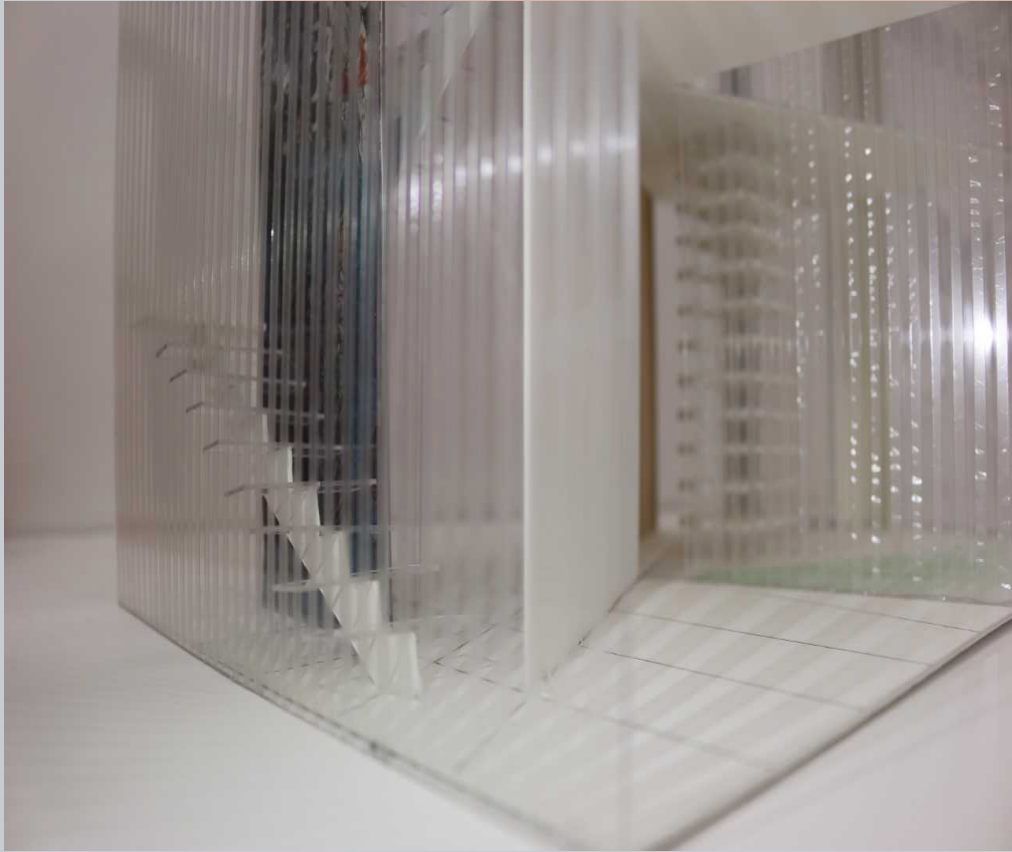
For the final project we designed a gallery | creative | work space specifically for our artist. In this final model we focused on the previous ideas but added on concepts of approach, entry, openings, and a connection to the surrounding environment. I wanted to keep a similar theme as that seen in my previous models- more light, ethereal space. I accomplished this with the use of large amounts of glass, white walls, and white mesh fabric. I kept my designs open, while still establishing the difference between public and private spaces and distinguishing hierarchy of space.

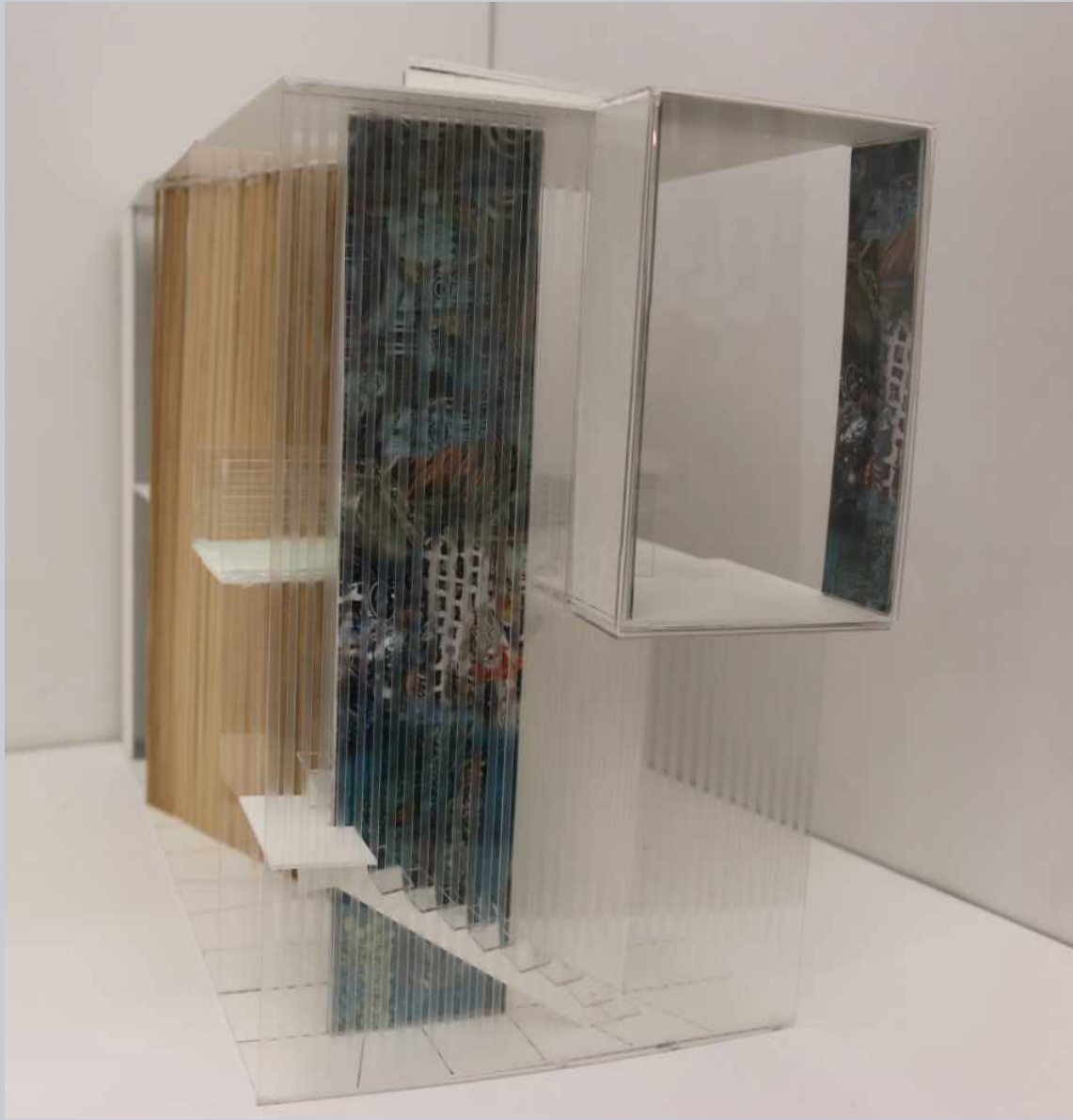


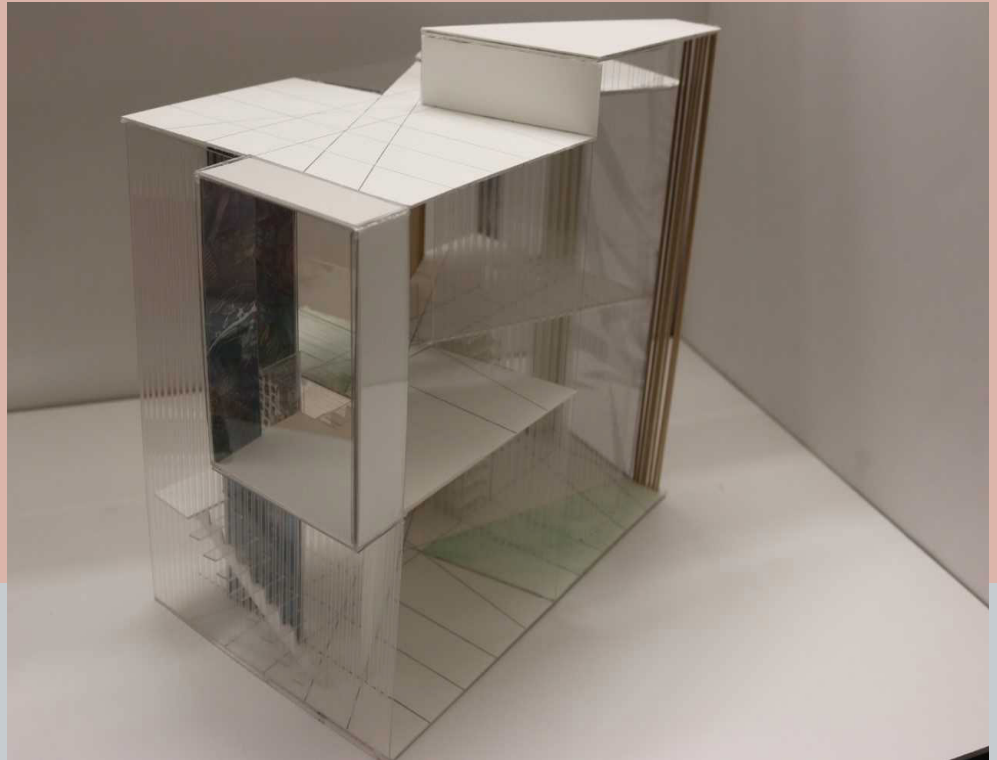


### **Project Three Process Model**

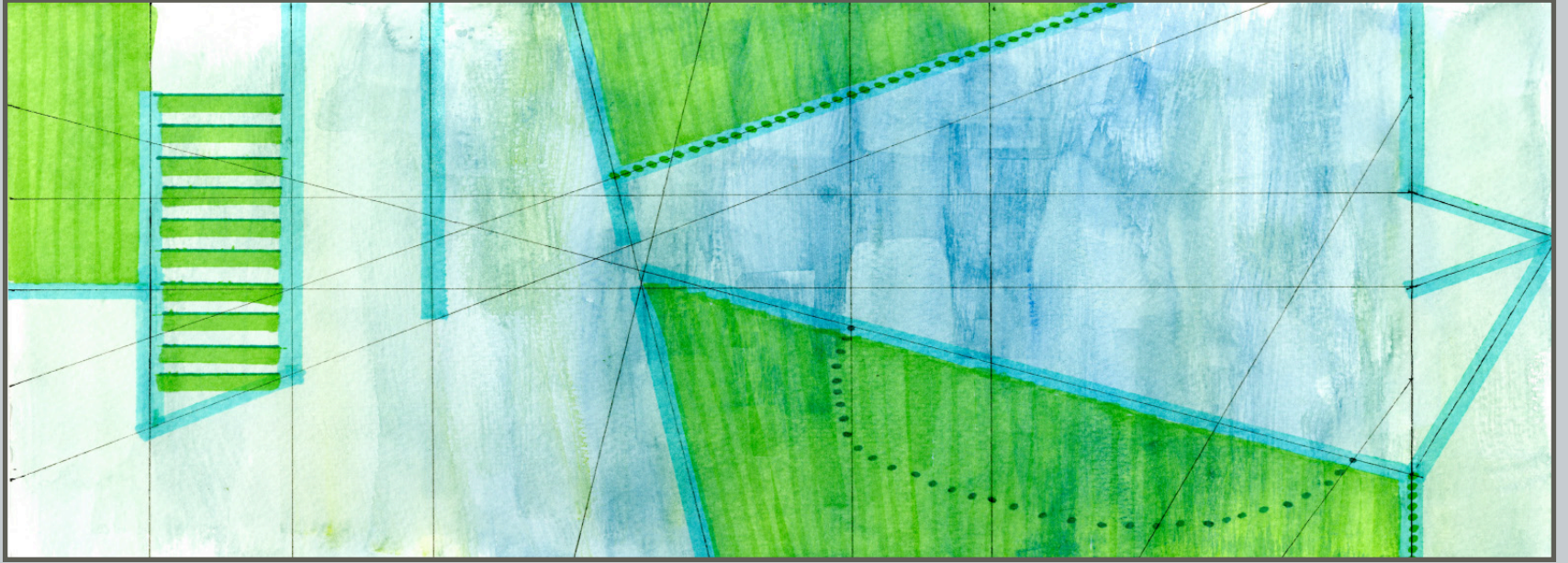
This was a draft model created to experiment with the layout of our spaces and to try out different materials.



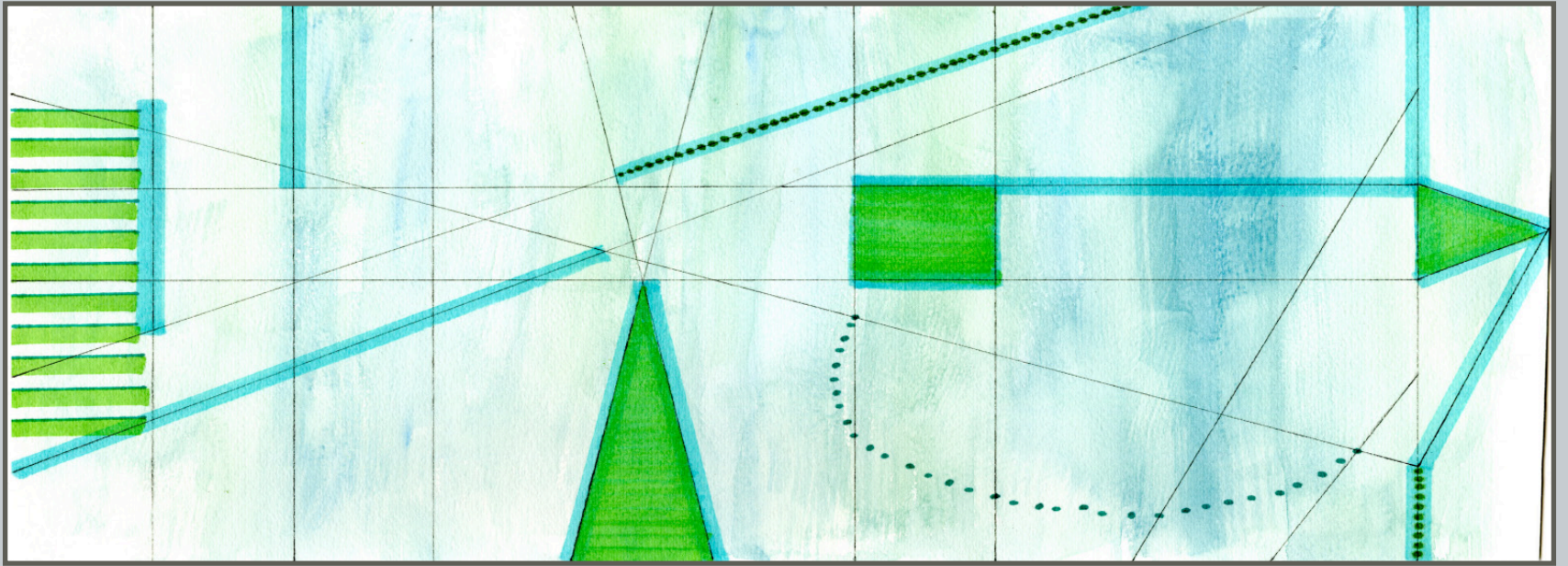


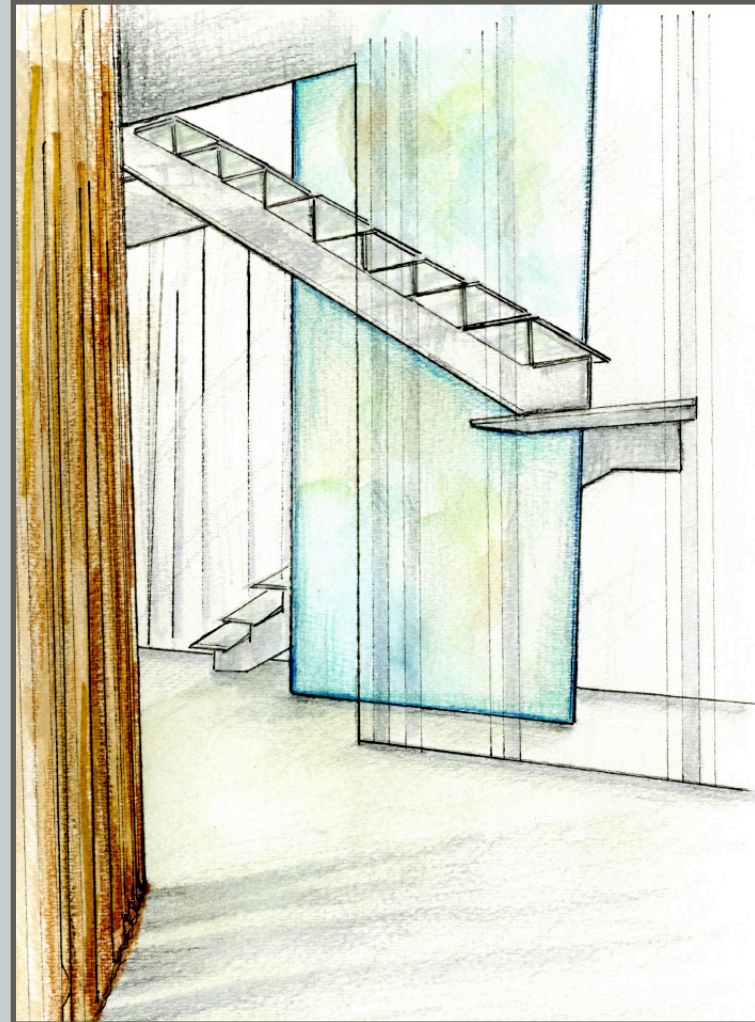
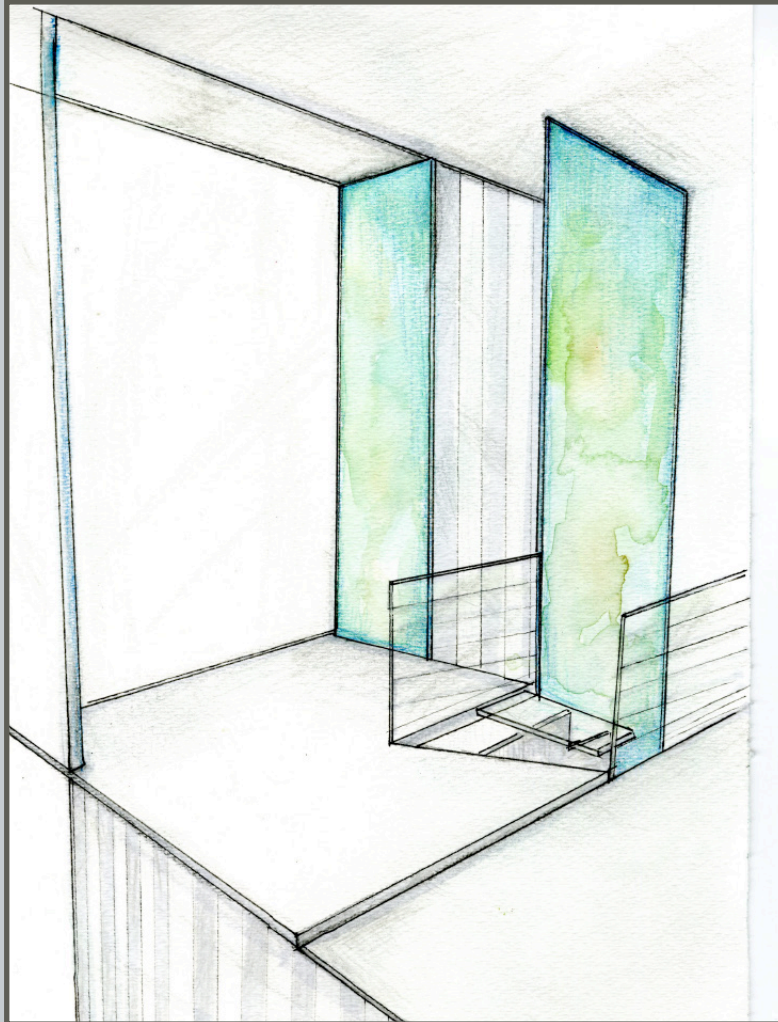


Level Two




Level One





**Expressive Floor Plans and  
Interior Perspectives**





Form | Space | Order has taught me how to construct models and express my ideas through well balanced and cohesive designs. I have learned different spacial organizations and relationships, and how they interact. I've come to understand that concept is the most vital component in design. Having a solid concept allows for further exploration into the design. I now know the difference between intuitive and analytical design. Having reasons behind your design decisions is important, choices cant always be intuitive. All of this knowledge will help further myself in my design endeavors.



Summer Bray  
Form | Space | Order  
Process Book